

**Internal hinges.**  
(Cannot be compromised from outside)

**Intergrated "rain canopy"**



**Multi-angle mounting brackets**



**Flame Retardant**

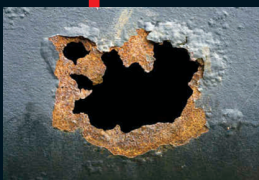
**IP Level: 66**

**Flush mounted window option**



**Quarter Turn Lock**

**Durable GRP Material**



**Can accommodate DB Kit/  
Inner Door.**

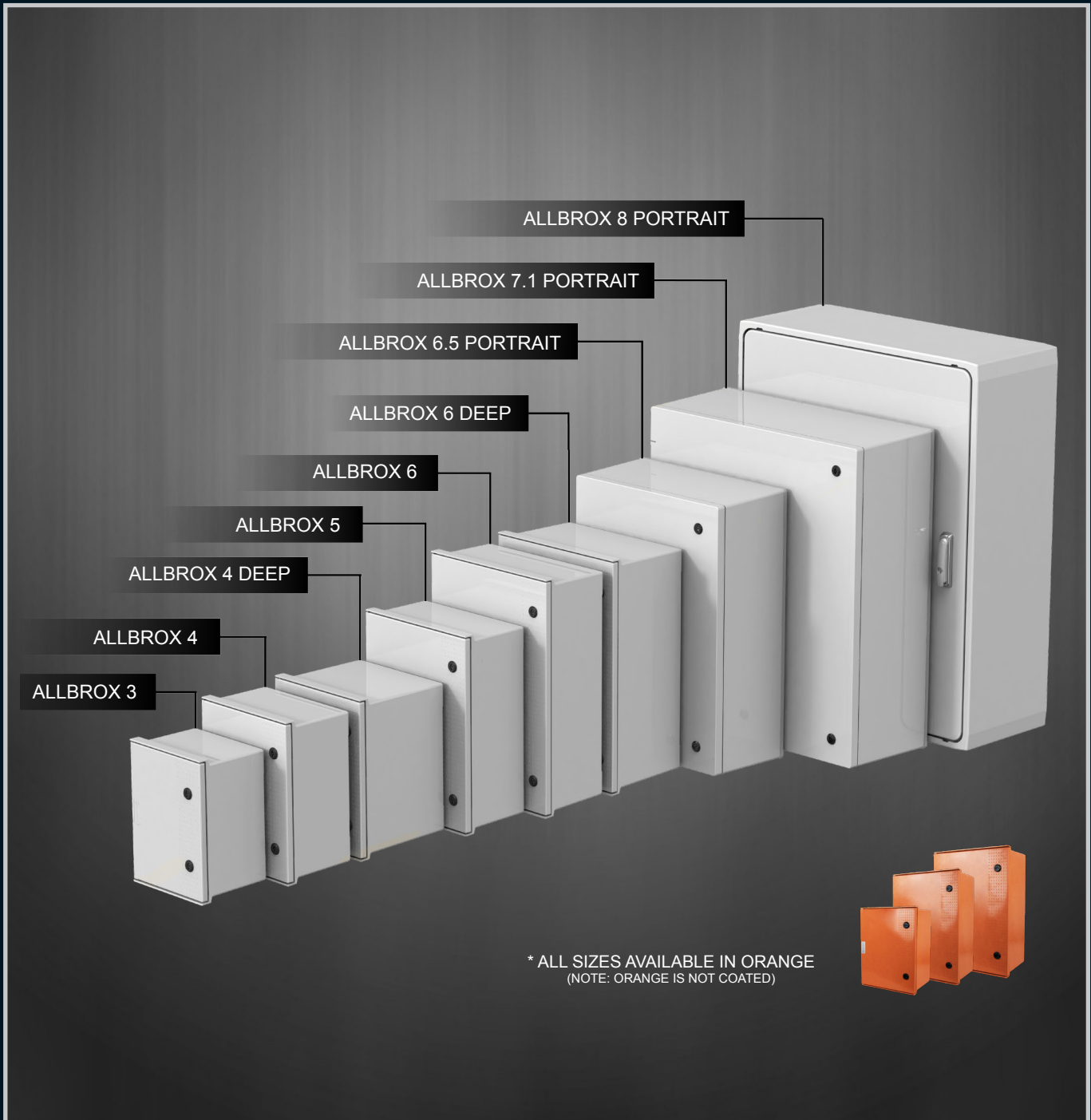
*\* Allbrox 4 Deep and 6 Deep can not accommodate DB Kit*



Material	SMC (Sheet Moulding Compound), PC for window			
Operating Temperature	-50° C to + 200° C			
Glow Wire Capability / Flammability	960° / UL94 V0			
Expected UV Life (Direct Exposure)	25 years +			
IP Level	IP66			
IK Level	IK10			
Security Level	1	2	3	4

**\* PLEASE NOTE:**

- Allbrox® is not suitable to install on back (Face Up)
- Allbrox® 3-6D must be installed in portrait orientation ONLY.



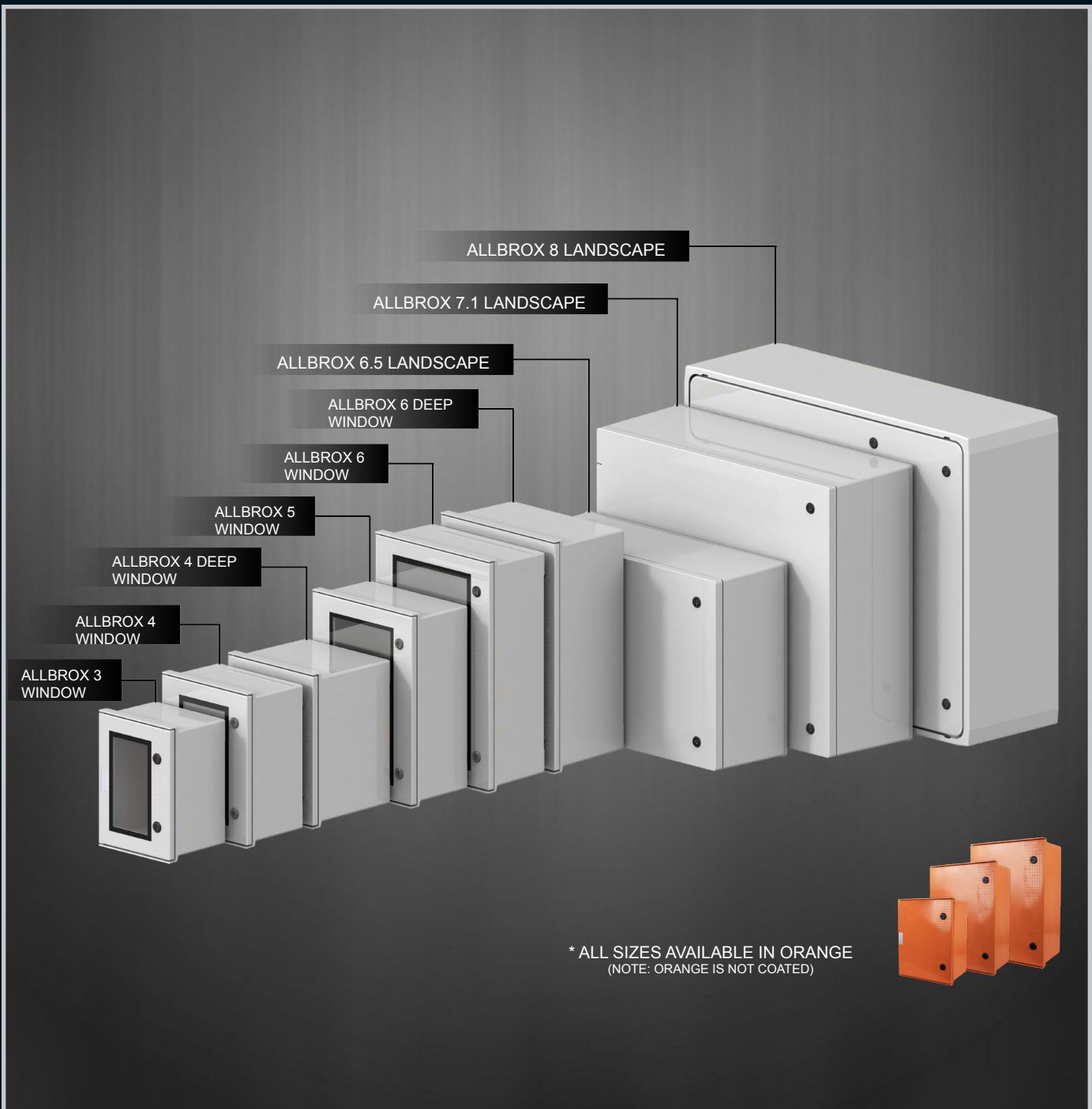
- Enclosures
- Hinges
- Locks
- Handles
- Accessories
- Rotary Operating Handles
- Insulators
- Transformer Equipment
- Index

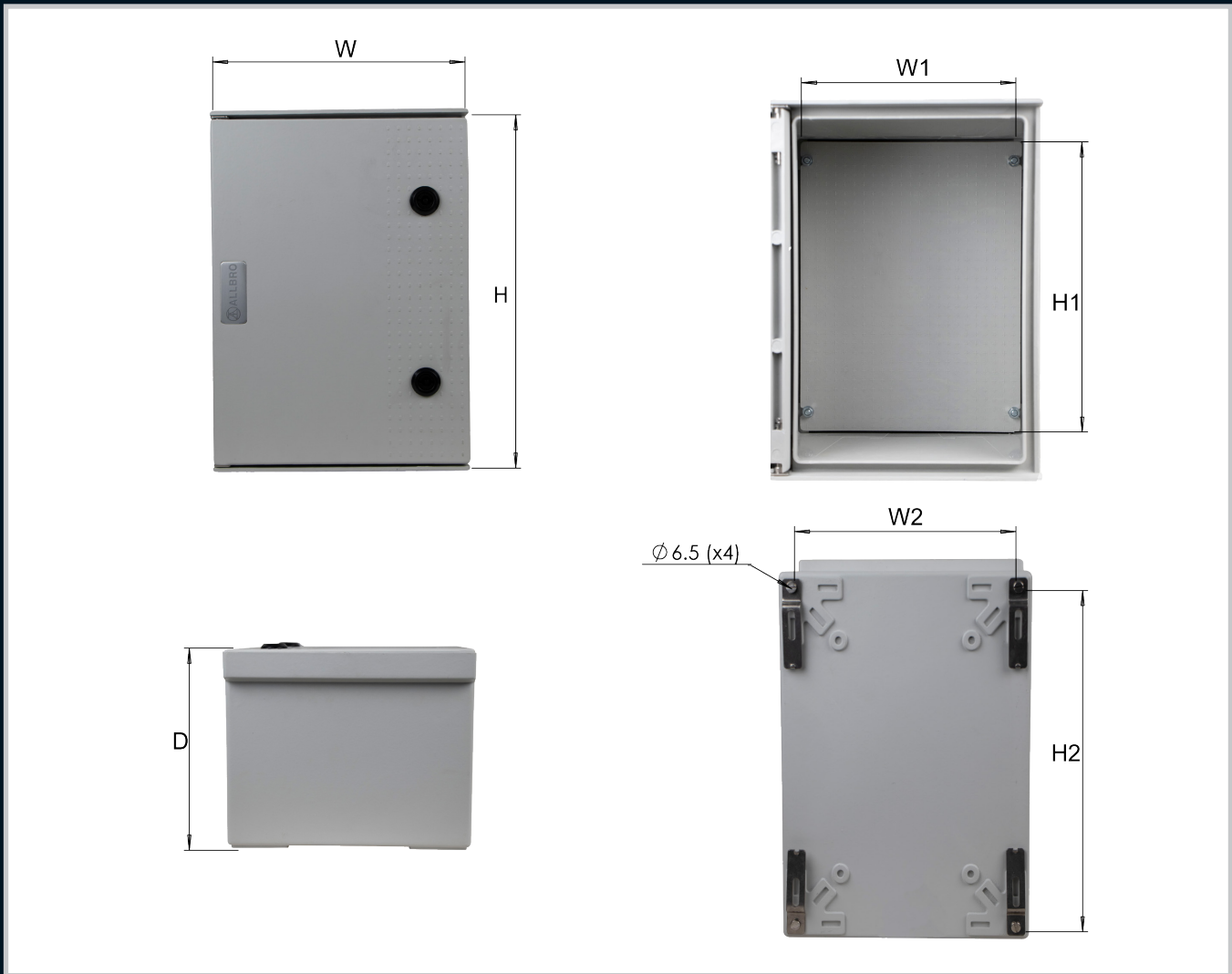
- Enclosures
- Hinges
- Locks
- Handles
- Accessories
- Rotary Operating Handles
- Insulators
- Transformer Equipment
- Index

<b>Material</b>	SMC (Sheet Moulding Compound), PC for window			
<b>Operating Temperature</b>	-50° C to + 200° C			
<b>Glow Wire Capability / Flammability</b>	960° / UL94 V0			
<b>Expected UV Life (Direct Exposure)</b>	25 years +			
<b>IP Level</b>	IP66			
<b>IK Level</b>	IK10			
<b>Security Level</b>	1	2	3	4

**\* PLEASE NOTE:**

- Allbrox® is not suitable to install on back (Face Up)
- Allbrox® 3-6D must be installed in portrait orientation ONLY.

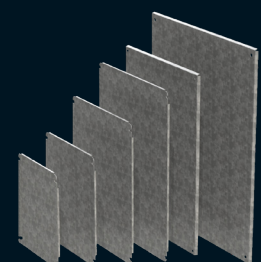




Part Number (Grey)	Part Number (Orange)	Description	H (mm)	W (mm)	D (mm)	W1 (mm)	H1 (mm)	W2 (mm)	H2 (mm)
ALL-003	ALL-003/O	Allbrox 3 with SMC Device plate	350	250	200	212	317	219	292,5
ALL-004	ALL-004/O	Allbrox 4 with SMC Device plate	400	300	200	262	364	269	342,5
ALL-004/D	ALL-004/D/O	Allbrox 4 Deep with SMC Device plate	400	300	273	262	364	269	342,5
ALL-005	ALL-005/O	Allbrox 5 with SMC Device plate	500	350	200	312	467	319	442,5
ALL-006	ALL-006/O	Allbrox 6 with SMC Device plate	600	400	200	362	567	369	542,5
ALL-006/D	ALL-006/D/O	Allbrox 6 Deep with SMC Device plate	600	400	250	362	567	367,3	540,8
ALL-006_5-L	ALL-006_5-L/O	Allbrox 6.5 Landscape with SMC Device plate	500	700	246	619	419	657,9	457,9
ALL-006_5-P	ALL-006_5-P/O	Allbrox 6.5 Portrait with SMC Device plate	700	500	246	419	619	457,9	657,9
ALL-007_1-P	ALL-007_1-P/O	Allbrox 7.1 Portrait with SMC Device plate	828	710	287	634	754	667,4	787,4
ALL-007_1-L	ALL-007_1-L/O	Allbrox 7.1 Landscape with SMC Device plate	710	828	287	754	634	787,4	667,4
ALL-008-P	ALL-008-P/O	Allbrox 8 Portrait with SMC Device plate	1000	800	320	710	910	738/714	914/938
ALL-008-L	ALL-008-L/O	Allbrox 8 Landscape SMC Device plate	800	1000	320	910	710	914/938	738/714

**Allbrox Galvanised Steel Device Plate**

Part Number	Description	H (mm)	W (mm)	Thickness
ALL-M/SMPLATE-3	ALL Mounting Steel Plate No.3	311	238	1.6
ALL-M/SMPLATE-4	ALL Mounting Steel Plate No.4	361	288	1.6
ALL-M/SMPLATE-5	ALL Mounting Steel Plate No.5	461	338	1.6
ALL-M/SMPLATE-6	ALL Mounting Steel Plate No.6	554	380	1.6
ALL-M/SMPLATE-6_5	ALL Mounting Steel Plate No.6_5	590,7	390,7	2
ALL-M/SMPLATE-7	ALL Mounting Steel Plate No.7	605	532,7	2



Enclosures  
Hinges  
Locks  
Handles  
Accessories  
Rotary Operating Handles  
Insulators  
Transformer Equipment  
Index

## ALLBROX® 4-6

### Distribution Board Kit

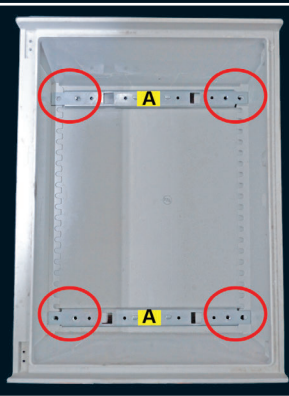


### Allbrox® Distribution Board Kit

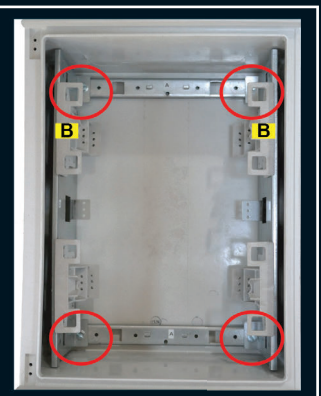
Part Number	Description	No. of Rows	MCB's Per Row	No. of Neutral Bars	No. of Earth Bars
ALL-004/DBK-A	Allbrox 4 Distribution Board Kit Assembled	2	10	2x (14 way)	2x (12 way)
ALL-005/DBK-A	Allbrox 5 Distribution Board Kit Assembled	3	13	4x (14 way)	4x (12 way)
ALL-006/DBK-A	Allbrox 6 Distribution Board Kit Assembled	4	15	5x (15 way)	2x (18 way) + 2x (12 way)

### Allbrox® Distribution Board Kit Assembly

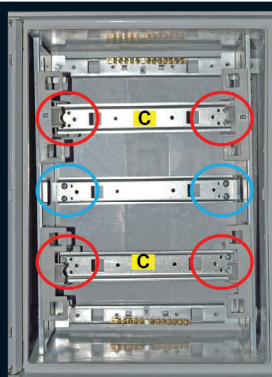
1) Remove device plate from the base. Leave the 4 x M6 nuts in place for fixing the mounting rails in place. Fit mounting rails (A) as shown using the 4 x M6 x 12 CH EG screws and M6 washers. Ensure that the bigger space between the hole and end of the mounting rail is fitted toward the hinge side of the box.



2) Fit the steel side plates with the plastic supports (B) onto the mounting rails (A) using the 4 x M6 x 12CH EG screws and M6 washers as shown.



3) Fit the steel din rails (C), for breakers, into the plastic supports using 2 x 3.5 x 12 Panpozi thread cutter screws on each end as shown. Fit the steel din rail, for neutral bar, upside down using 2 x 8 x 9.5 thread cutter screws on each end as shown.



3.5 x 12 Panpozi thread cutter screws  
8 x 9.5 Panpozi thread cutter screws

4) Clip the plastic Fascia plates (D) into the plastic supports as shown.

Product	No. Fascia Plates
ALLBROX 4	2
ALLBROX 5	3
ALLBROX 6	4



**ALLBROX® 4-6**

**Inner Doors**



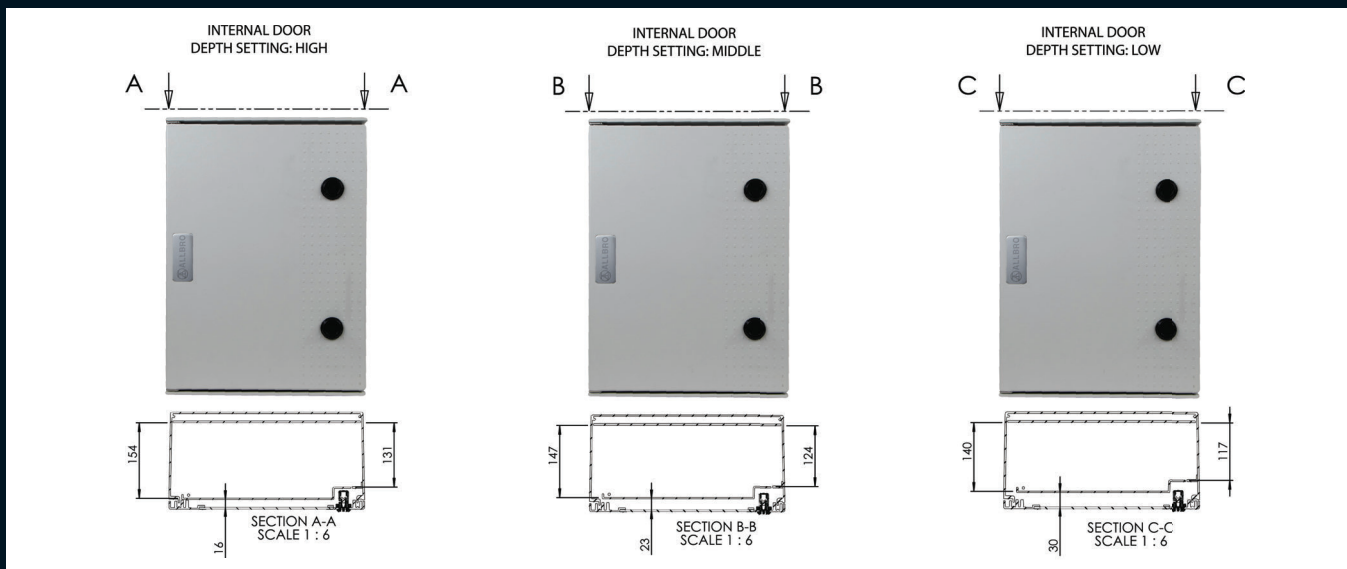
**Allbrox® Inner Door**

Part Number	Description
ALL-004/IN/DOOR	Allbrox 4 Inner Door
ALL-005/IN/DOOR	Allbrox 5 Inner Door
ALL-006/IN/DOOR	Allbrox 6 Inner Door

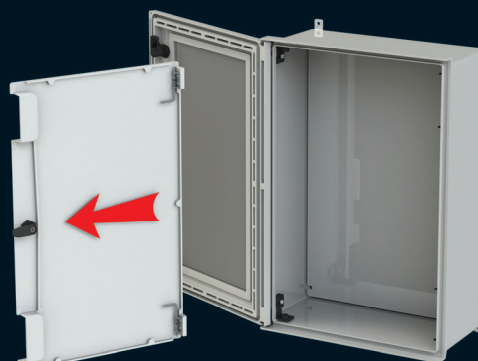
**Allbrox® with PC Window**

Part Number	Description
ALL-003/CLEARPC	Allbrox 3 with clear Polycarbonate window
ALL-004/CLEARPC	Allbrox 4 with clear Polycarbonate window
ALL-005/CLEARPC	Allbrox 5 with clear Polycarbonate window
ALL-006/CLEARPC	Allbrox 6 with clear Polycarbonate window

**Allbrox® Inner Door Fitting Options**



1) To remove or place the inner door in an Allbrox® simply pull the two hinge pins as indicated towards each other.



2.1) To remove the door, complete step 1 and pull the inner door towards yourself.

2.2) To place the inner door into the Allbrox® complete step 1 and let the hinge pins go once the pins are in-line with the hinge sleeve.

Enclosures

Hinges

Locks

Handles

Accessories

Rotary Operating Handles

Insulators

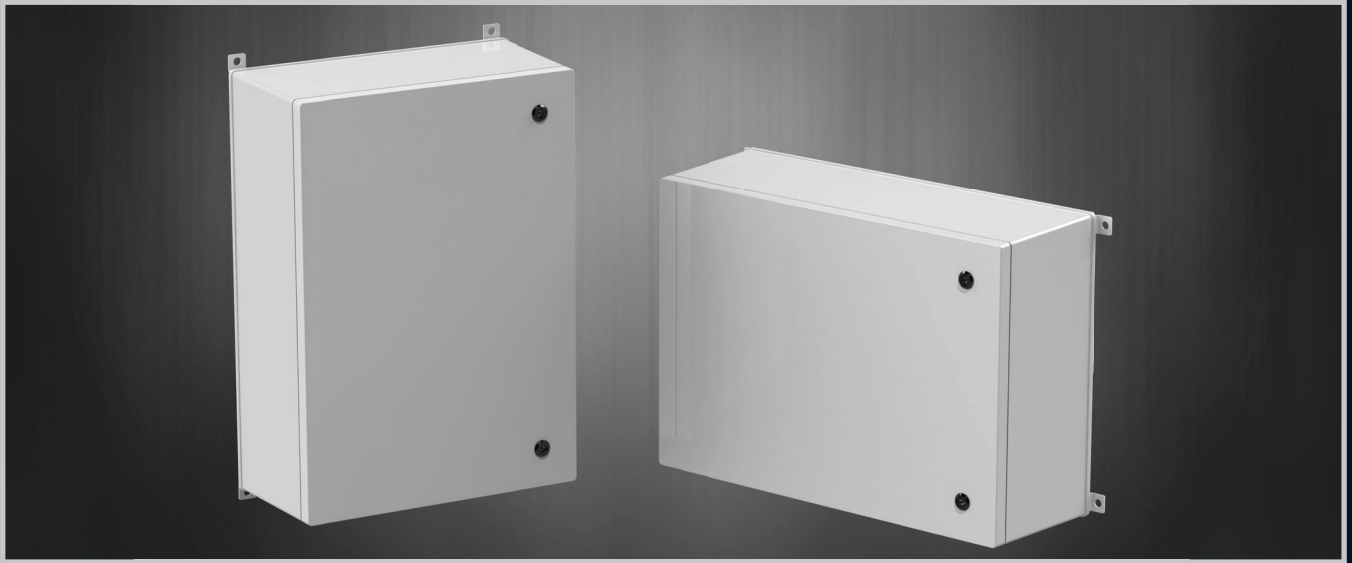
Transformer Equipment

Index

\* Please note that the construction of the 6.5 and 7.1 sizes differs from the smaller sizes (3-6D)

Enclosures

**ALLBROX® 6.5**

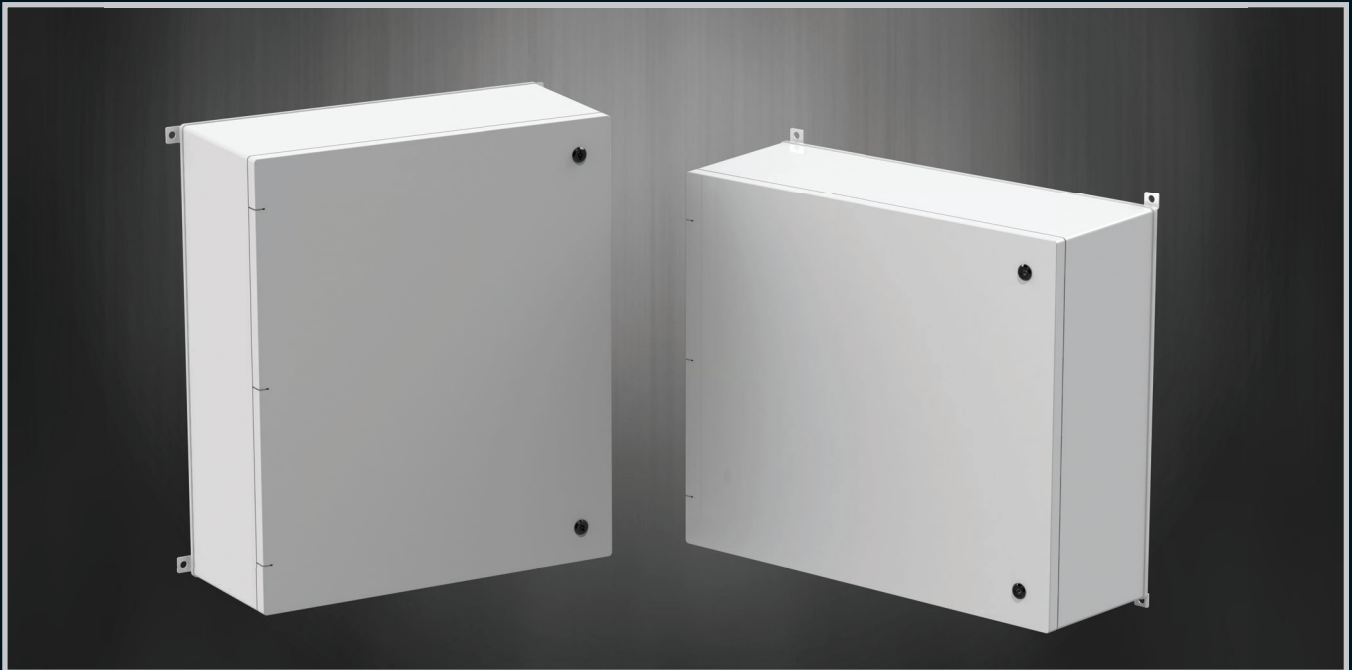


Hinges

Locks

Handles

**ALLBROX® 7.1**



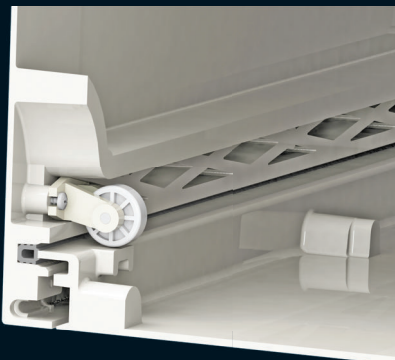
Accessories

Rotary Operating Handles

Insulators

Transformer Equipment

Index



Door locator



Extra strength lid



Easily Removable door



Enclosures
Hinges
Locks
Handles
Accessories
Rotary Operating Handles
Insulators
Transformer Equipment
Index