



1

Enclosures



Enclosures

Enlec
Polycarbonate Enclosures for Electronic & Electrical Applications



Pg. 17

Utilec
Standard General Purpose GRP Enclosures



Pg. 20

RL
Basic Hinged Enclosures



Pg. 22

Okari
Modular Wall Mounted GRP Enclosures



Pg. 24

UB-40
UB-41
Round GRP Junction Boxes



Pg. 26

Allbrox
All New Range of SMC Hinged Enclosures



Pg. 28

Terminal Range
High Impact GRP Enclosures for Tough Environments



Pg. 26

AllTilt
Pole Top Enclosures for Distribution and Metering



Pg. 50

Ready Boards and Passive Bases



Pg. 34

Weatherproof Socket Outlet Boxes



Pg. 40

Wall Boxes



Pg. 41

Pool Boxes



Pg. 42

Indoor Distribution Boards



Pg. 43

Weather Proof Distribution Boards



* Coming Soon

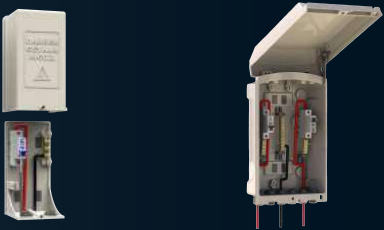
Pg. 45

Empty Pole Boxes For Metering/Distribution/Termination



Pg. 49

Pre-Configured Pole Boxes For Distribution



Pg. 48

Legacy Products



Pg. 54

AllVault



Pg. 52

Fablec



Pg. 33

Data Cable Management



Pg. 56

RJ45



Pg. 56

Enclosures

One of our core competencies is the design and manufacture of non-metallic electric enclosures. Various materials are used depending on environment and application.

The two main families of materials can be separated into:

- Plastics - Injection Moulded
- Glass Reinforced Polyester (GRP) - Compression Moulded

Plastics

18 Injection moulding machines up to 400T.



GRP - Compression moulding 80 machines up to 800T.



Hinges

Locks

Handles

Accessories

Rotary Operating
Handles

Insulators

Transformer
Equipment

Index



* Assembly



* Stores

Glass Reinforced Polyester (GRP)

Modern industries demand structural materials that are lightweight, strong and versatile. Materials that resist corrosion and temperature extremes and which deliver freedom of design and low system costs. The ideal solution is a family of structural, fibre reinforced thermosets: SMC (Sheet Moulding Compound) and DMC (Dough Moulding Compound). These materials combine mechanical and physical properties with the lowest system cost, without compromising quality.

Exceptional electrical and UV properties make GRP the material of choice for outdoor electrical enclosures.

Allbro compounds its own SMC and DMC. Numerous formulations have been engineered to address different technical application challenges. Since DMC and SMC are composite materials, we are able to dramatically change aspects like strength, conductivity, surface finish, colour, chemical compatibility etc.

Dough Moulding Compound (DMC)
(Also known as BMC)



Sheet Moulding Compound (SMC)



* See Material Properties on Page 255 for detailed information

Enclosures

DMC compared to SMC

DMC



Fibre lengths 6, 12, 18 mm

SMC



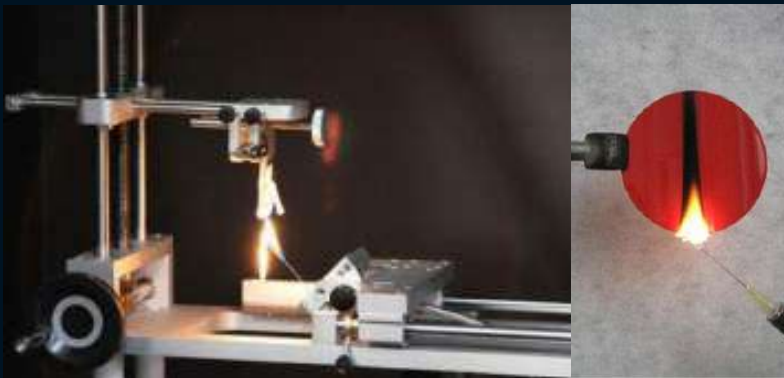
Fibre lengths 25-50mm

Hinges

Locks

Handles

SANS 60695-11-10 Needle Flame Test or UL94 - Flame Resistance Test



Accessories

Rotary Operating
Handles

Insulators

Transformer
Equipment

Index

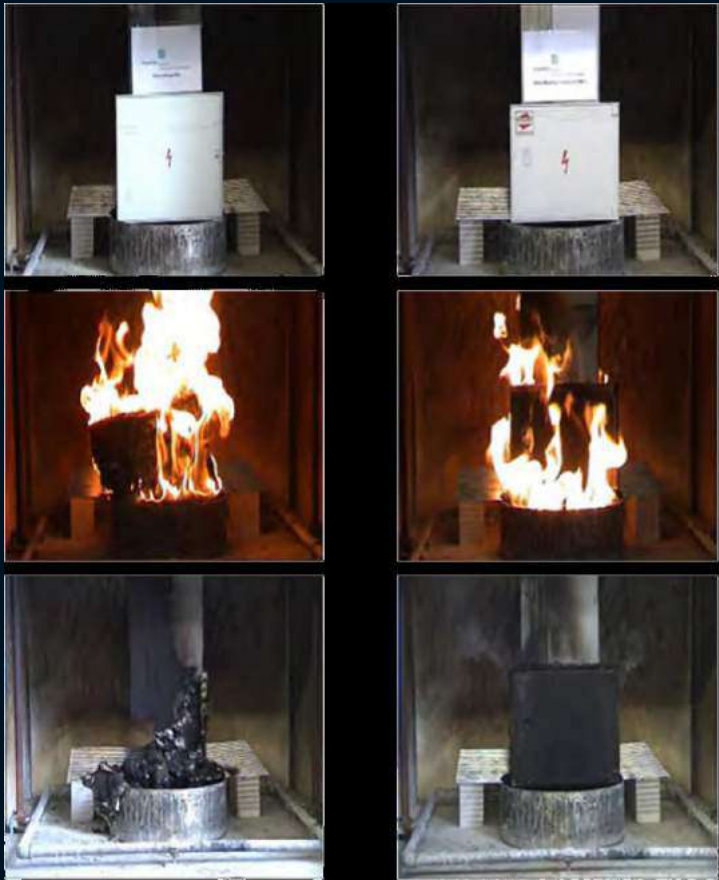
5VA Surface Burn	Burning stops within 60 seconds after five applications of five seconds each of a flame (larger than that used in Vertical burn testing) to a test bar. Test specimens MAY NOT have a burn-through (no hole). This is the highest (most flame retardant) UL94 rating.
5VB Surface Burn	Burning stops within 60 seconds after five applications of five seconds each of a flame (larger than that used in Vertical burn testing) to a test bar. Test specimens MAY HAVE a burn-through (a hole).
V-0 Vertical Burn	Burning stops within 10 seconds after two applications of ten seconds each of a flame to a test bar. NO flaming drips are allowed.
V-1 Vertical Burn	Burning stops within 60 seconds after two applications of ten seconds each of a flame to a test bar. NO flaming drips are allowed.
V-2 Vertical Burn	Burning stops within 60 seconds after two applications of ten seconds each of a flame to a test bar. Flaming drips ARE allowed.
H-B Horizontal Burn	Slow horizontal burning on a 3mm thick specimen with a burning rate of less than 3"/min or stops burning before the 5" mark. H-B rated materials are considered "self-extinguishing". This is the lowest (least flame retardant) UL94 rating.

Extended - Real Life Flammability Test

While Needle flame is an interesting flammability test for plastics in general the test below shows how much better SMC performs against even the most advanced engineered V0 plastics

Thermoplastic Cabinet UL94 V0

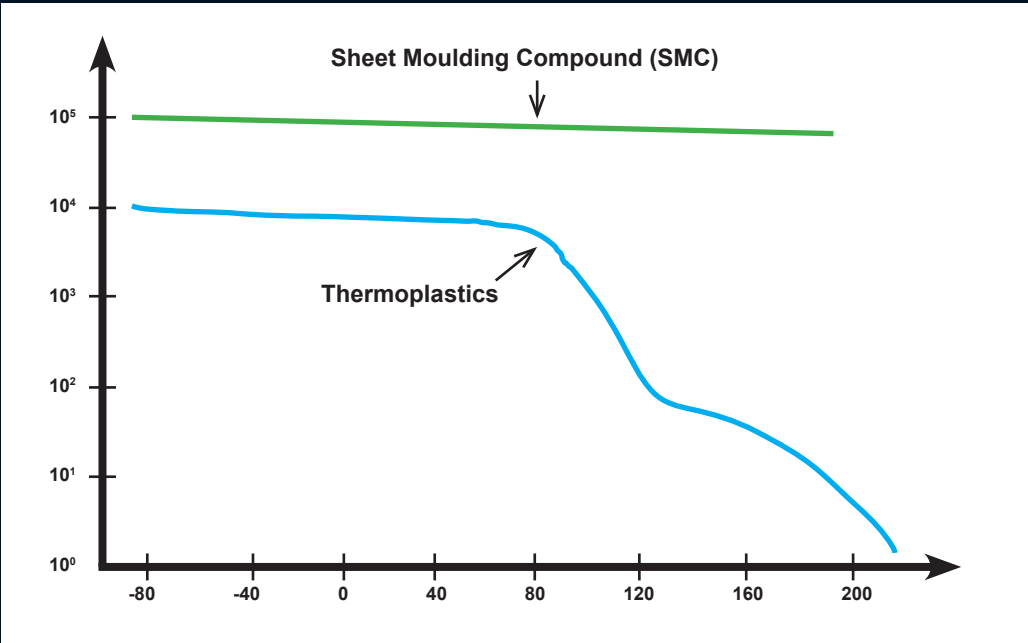
SMC Cabinet



4 minutes

25 minutes

Retention of dimensional properties: GRP compared with plastics



Enclosures

Hinges

Locks

Handles

Accessories

Rotary Operating
Handles

Insulators

Transformer
Equipment

Index

Enclosures

Hinges

Locks

Handles

Accessories

Rotary Operating
Handles

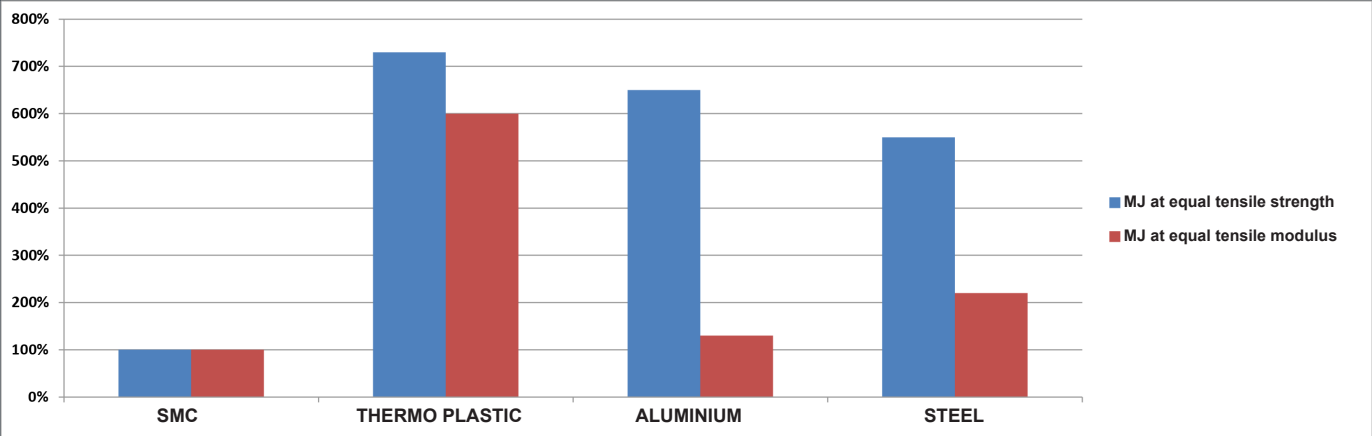
Insulators

Transformer
Equipment

Index

“GRP is Green”

Energy use is an important element in the total environmental impact of a product. Producing materials from base materials requires energy in each step of the process. A way to compare the energy use for the production of a part is to calculate back to equal properties. In the graph below the relative use for producing a part with equal tensile strength and equal tensile stiffness is represented:



“ a part produced in SMC requires 5-7 times less energy to be produced than producing the same part in steel, aluminium or thermoplastic materials at equal strength”



Some of Allbro's Latest innovations using GRP Composite Material

AlliVault

High Security Enclosures



Green Pillar

Part Number: PB676



Modular Fibre Management Underground Enclosure Systems



1063.06mm x 1185mm x 1034.07mm (H x W X D)

Enclosures

Hinges

Locks

Handles

Accessories

Rotary Operating
Handles

Insulators

Transformer
Equipment

Index

Enclosures
Hinges
Locks
Handles
Accessories
Rotary Operating Handles
Insulators
Transformer Equipment
Index



* SMC manufacturing line



SMC and DMC manufacturing process

SMC is made as a continuous sheet. The resin paste is transferred to a doctor box where it is deposited onto a moving carrier film passing directly beneath. The doctor box controls the amount of the resin paste applied. Simultaneously, glass fibre rovings are fed into a rotary cutter above the resin-covered carrier film. Fibres are chopped to length (generally 25mm, or 50mm) and randomly deposited onto the resin paste. The amount of glass is controlled by the cutter and by the speed of the carrier film. Downstream from the chopping operation, a second carrier film is coated with resin paste and is laid, resin side down, on top of the chopped fibres. This stage of the process creates a resin paste and glass fibre 'sandwich' which is then sent through a series of compaction rollers where the glass fibres are consolidated with the resin paste and air is squeezed out of the sheet.

Sheet dimensions are normally 2-4 mm thick and 1.1 mm wide. The length and weight of the SMC sheet is determined by moulder preference for handling and is usually stored on a 350kg (standard) up to 1500kg rolls or bi-folded (like computer paper) into large bins. Modern SMC production is a highly automated and computer regulated process. Before the SMC can be used for moulding it must mature. This maturation time is necessary to allow the relatively low-viscosity resin to chemically thicken. The SMC will be kept in a maturation room at a controlled temperature (normally 48 hours at 30°C) and typically requires two to five days to reach the desired moulding viscosity. Usually SMC has a shelf life ranging from several weeks to several months from the date of manufacture. The time frame can be extended or reduced depending on the SMC formulation and storage conditions. A storage temperature of no higher than 20°C is recommended.

Like SMC, DMC is a fibre reinforced composite material which primarily consists of an amalgam of thermosetting resin, chopped glass fibre reinforcement and filler in the form of a bulk material. Additional ingredients such as low profile additives, cure initiators, thickeners and mould release agent are added to enhance processing performance. DMC is less loaded with glass fibres than SMC and fibre length is shorter at 6 to 12mm. Filler loadings are higher than for SMC. There are several techniques for the batch production of DMC. The most common mixing process involves a Z-blade mixers which amalgamates the resin paste, fillers, additives and reinforcements into a mass material with a dough-like consistency. The bulk product is packed in plastic bags impermeable to styrene diffusion and supplied in bins. Like with SMC, it can be supplied in pre-weighed charges according to customer needs.

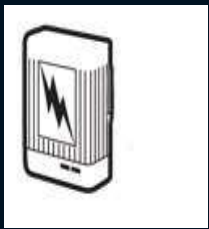
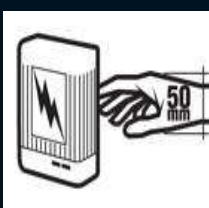
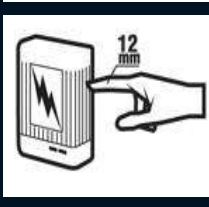
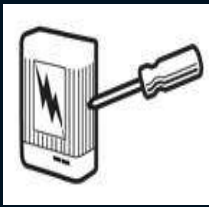
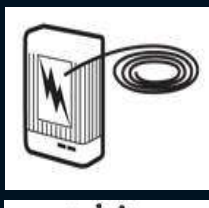


IP Ratings for Enclosures (IEC60529)

IEC 60529 is an international standard that was created for the purpose of clarifying the capability of an enclosure to protect the contents from solid and liquid bodies.


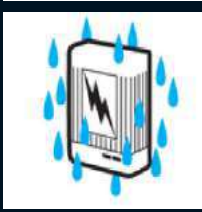


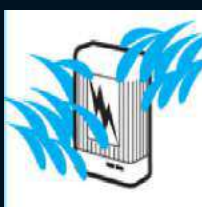

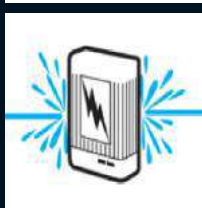
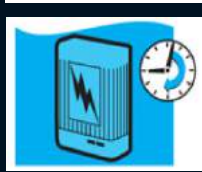
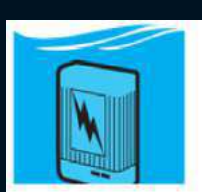
IP ??



Protection against solid bodies

	0	No Protection
	1	Protected against solid bodies larger than 50 mm (e.g. a hand)
	2	Protected against solid bodies larger than 12 mm (e.g. a finger)
	3	Protected against solid bodies larger than 2.5 mm (tools, wires)
	4	Protected against solid bodies larger than 1 mm (fine tools, small wires)
	5	Protected against dust (no harmful deposits)
	6	Totally dust tight

Protection against liquids

	0	No Protection
	1	Protected against vertically falling water droplets (condensation)
	2	Protected against water droplets deflected at up to 15° from vertical
	3	Protected against rainwater at up to 60° from vertical
	4	Protection against water spray from all directions
	5	Protected against low - pressure water jets from all directions
	6	Protected against powerful water jets from all directions
	7	Protected against the effects of immersion
	8	Protected against prolonged effects of immersion under pressure

Enclosures	
Hinges	
Locks	
Handles	
Accessories	
Rotary Operating Handles	
Insulators	
Transformer Equipment	
Index	

Enclosures

No standard exists for enclosure access, so to make things easier we have created one of our own.

Security Level

1

2

3

4

Hinges

Open Access - Enclosure can be opened without a tool.

Example:



Locks

Security Level

1

2

3

4

Limited Access - Tool is required

Example:



Handles

Accessories

Security Level

1

2

3

4

Limited Access - Lockable

Example:



Rotary Operating
Handles

Insulators

Security Level

1

2

3

4

Limited Access - Lockable/Vandal Resistant/Remote Access control/Monitoring

Example:



Transformer
Equipment

Index

MATERIAL	Polycarbonate			
OPERATING TEMPERATURE	- 20°C to + 110°C			
GLOW WIRE CAPABILITY / FLAMMABILITY	960° / UL94 V0			
EXPECTED UV LIFE (DIRECT EXPOSURE)	5-8 years (10-15 years - Indirect Exposure)			
IP LEVEL	IP66			
SECURITY LEVEL	1	2	3	4
ENVIRONMENT (INDOOR/OUTDOOR)	Indoor and Outdoor use			



Enclosures	Hinges	Locks	Handles	Accessories	Rotary Operating Handles	Insulators	Transformer Equipment	Index
------------	--------	-------	---------	-------------	--------------------------	------------	-----------------------	-------

Enclosures
Hinges
Locks
Handles
Accessories
Rotary Operating Handles
Insulators
Transformer Equipment
Index



Mounting does NOT affect IP level
(Many enclosures require drilling which compromises IP level)

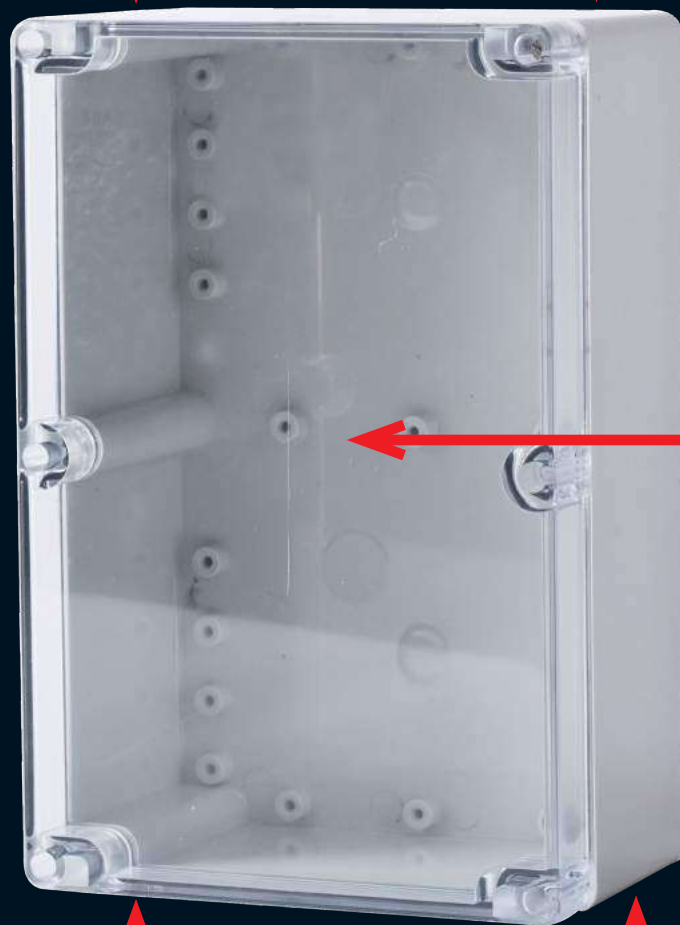


1/4 Turn Stainless steel screws

(Self tapping screws that deteriorate the plastic or plastic screws they mount for which are not durable)



17 Different sizes
(Widest range in South Africa)



Clean surface for mounting equipment or lables unlike other plastic enclosures that have unsighting sprew/injection marks

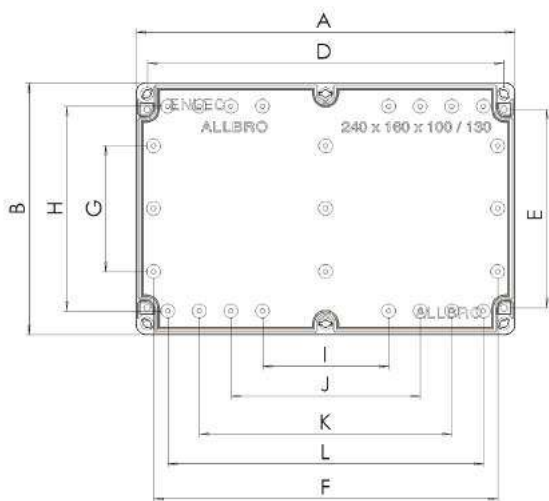


Flame Retardant High Quality Polycarbonate Material (Base & Lid)
See UL 94 (V0) and Needle Flame (V0) on page 10

Halogen Free



Halogen free



Dimensions														Part Number		Part No
A (Height)	B (Width)	C (Depth)	D	E	F	G	H	I	J	K	L	M	N	Clear Lid IP66	Grey Lid IP66	Device Plate Sold Seperately
80	80	55	68	50	58	N/A	58	N/A	N/A	N/A	40	15	40	ENL080806C	ENL080806P	ENL0808DP
120	80	55	106	46	96	N/A	58	N/A	N/A	40	80	15	40	ENL120806C	ENL120806P	ENL1208DP
120	80	90	106	46	96	N/A	58	N/A	N/A	40	80	15	75	ENL120809C	ENL120809P	ENL1208DP
120	120	55	106	86	100	40	98	N/A	N/A	N/A	80	15	40	ENL121206C	ENL121206P	ENL1212DP
120	120	90	106	86	100	40	98	N/A	N/A	N/A	80	15	75	ENL121209C	ENL121209P	ENL1212DP
160	80	55	146	46	136	N/A	58	N/A	N/A	60	120	15	40	ENL160806C	ENL160806P	ENL1608DP
160	80	90	146	46	136	N/A	58	N/A	N/A	60	120	15	75	ENL160809C	ENL160809P	ENL1608DP
160	120	90	146	86	136	N/A	90	N/A	N/A	N/A	120	15	75	ENL161209C	ENL161209P	ENL1612DP
160	160	90	146	126	140	80	130	N/A	N/A	N/A	120	15	75	ENL161609C	ENL161609P	ENL1616DP
200	120	90	186	86	176	40	90	N/A	N/A	116	160	15	75	ENL201209C	ENL201209P	ENL2012DP
200	150	90	186	116	N/A	56	118	N/A	N/A	80	160	15	75	ENL201509C	ENL201509P	ENL2015DP
240	120	100	226	86	218	40	90	80	120	160	200	25	75	ENL241210C	ENL241210P	ENL2412DP
240	160	100	226	126	218	80	130	80	120	160	200	25	75	ENL241610C	ENL241610P	ENL2416DP
240	160	130	226	126	218	80	130	80	120	160	200	55	75	ENL241613C	ENL241613P	ENL2416DP
300	230	100	286	196	278	150	200	140	180	220	260	25	75	ENL302310C	ENL302310P	ENL3023DP
300	230	130	286	196	278	150	200	140	180	220	260	55	75	ENL302313C	ENL302313P	ENL3023DP
360	200	150	346	166	338	120	170	200	240	280	320	50	100	ENL362015C	ENL362015P	ENL3620DP

Description	Part Number
ENL-Hinges	ENL-H
ENL-Mounting Feet	ENL-M
ENL-2 Set 4 Screw Combo	ENL-4
ENL-6 Set Screw Combo	ENL-6



Hinges



Screw Set



Mounting Feet

Enclosures

Hinges

Locks

Handles

Accessories

Rotary Operating
Handles

Insulators

Transformer
Equipment

Index

Enclosures
Hinges
Locks
Handles
Accessories
Rotary Operating Handles
Insulators
Transformer Equipment
Index

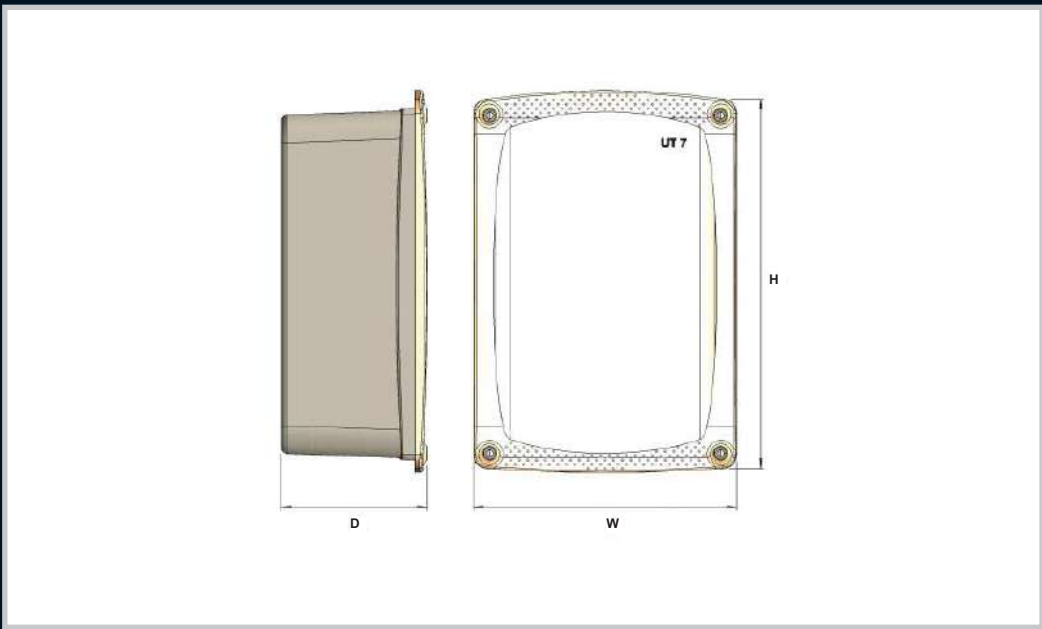
MATERIAL	DMC (Dough Moulding Compound)			
OPERATING TEMPERATURE	-50° C to + 200° C			
GLOW WIRE CAPABILITY / FLAMMABILITY	960° / UL94 V0			
EXPECTED UV LIFE (DIRECT EXPOSURE)	25 years +			
IP LEVEL	IP54 for slide lid application, IP65 for screw lid application			
SECURITY LEVEL	1	2	3	4
ENVIRONMENT (INDOOR/OUTDOOR)	Indoor and Outdoor use			



Note: Why slide lid? No gasket is used, so less chance of deterioration over several operations. Lifespan of IP level is increased.



Description	Part Number
UT Mounting Feet	UT-MF
UT4 Shroud Kit	UT4-DIN
UT4 Shroud 6 Way Samite	UT4-SAM
UT6 Shroud 8 Way Din	UT6-DIN
UT-6 Shroud 11 Way Samite	UT6-SAM
UT10 Shroud 24 Way Din	UT10-DIN
UT10 Shroud 32 Way Samite	UT10-SAM



Product Name	External Dimensions (mm)			Internal Dimensions (mm)			Screw Lid IP66	Slide Lid IP54	Per Box	Device Plate Sold Separately
	H	W	D	H1	W1	D1	Part Number	Part Number	Qty	Part Number
UT1	80	80	60	122	110	70	040-751	040-752	10	DEV-UT1
UT2	110	110	90	155	144	100	040-655	040-714	9	DEV-UT2
UT3	160	110	90	204	144	100	040-670	040-715	8	DEV-UT3
UT4	210	160	90	253	194	100	040-656	040-716	8	DEV-UT4
UT4 -D	211	160	180	253	194	186	040-753	040-761	6	DEV-UT4
UT5	210	210	125	257	246	136	040-657	040-717	6	DEV-UT5
UT6	260	210	125	307	246	136	040-658	040-718	4	DEV-UT6
UT7	310	210	125	357	246	136	040-671	040-719	4	DEV-UT7
UT8	310	260	165	359	298	176	040-672	040-720	2	DEV-UT8
UT9	310	310	165	359	348	176	040-673	040-721	2	DEV-UT9
UT10	410	410	165	459	448	176	040-674	040-722	2	DEV-UT10

Enclosures

MATERIAL	DMC (Dough Moulding Compound)
OPERATING TEMPERATURE	-50° C to + 200° C
GLOW WIRE CAPABILITY / FLAMMABILITY	960° / UL94 V0
EXPECTED UV LIFE (DIRECT EXPOSURE)	25 years +
IP LEVEL	IP54
SECURITY LEVEL	With RL the security level differs between products. Please note individual security rating.
ENVIRONMENT (INDOOR/OUTDOOR)	Indoor and Outdoor use

Hinges

RL and AP series enclosures preceded the more modern and functional range of enclosures we call Allbrox. Although superseded for the most part, there are still some applications where these tried and tested versions are preferred.

Locks



Security Level: 2

Part Number	Description	H	W	D	Description	QTY
040-727	RL-1P	150	150	100	Plain (Screw fastened Lid)	20
040-726	RL-1HW/L	150	150	100	Hinged with window	20
040-725	RL-1HP	150	150	100	Hinged plain box	20

Handles



Security Level: 2

Part Number	Description	H	W	D	Description	QTY
040-730	RL-2P	200	145	100	Plain (Screw Fastened Lid)	4
040-728	RL-2HP	200	145	100	Hinged plain box	4
040-729	RL-2HW	200	145	100	Hinged with window	4
040-766	RL-2CP	200	145	165	Plain (Screw Fastened Lid)	4
040-764	RL-2CHP	200	145	165	Hinged plain box	4
040-765	RL-2CHW	200	145	165	Hinged with window	4

Note: C = Deep Base, Shallow Lid

Rotary Operating
Handles



Security Level: 2

Part Number	Description	H	W	D	Description	QTY
040-769	RL-3P	260	220	230	Plain (Screw fastened Lid)	3
040-767	RL-3HP	260	220	230	Hinged plain box	3
040-768	RL-3HW	260	220	230	Hinged with window	3

Insulators

Transformer
Equipment



Security Level: 2

Part Number	Description	H	W	D	Description	QTY
040-733	RL-4P	350	250	160	Plain (Screw fastened Lid)	2
040-731/L	RL-HP	350	250	160	Hinged plain with latch	2
040-732/L	RL-4HW	350	250	160	Hinged window with latch	2
040-734	RL-4DHP	350	250	200	Hinged Deep plain box	4
040-735	RL-4DHW	350	250	200	Hinged with window Deep	4

Note: Special wired pole mounted enclosures available on request.

Index

RL - Series



Security Level: 3

Part Number	Description	H	W	D	Description	QTY
040-738	RL-5P	390	300	200	Plain (Screw fastened Lid)	3
040-736/L	RL-5HP	390	300	200	Hinged plain with latch	3
040-737/L	RL-5HW	390	300	200	Hinged window with latch	3
040-741	RL-5BP	390	300	141	Plain (Screw fastened Lid)	3
040-739	RL-5BHP	390	300	141	Hinged plain box	3
040-740	RL-5BHW	390	300	141	Hinged with window	3

Note: B = Shallow Lid
Orange colour available on request - used here for illustration only.
Standard colour is GREY.



Security Level: 3

Part Number	Description	H	W	D	Description	QTY
040-640	RL-6D-P	480	315	200	Hinged plain box deep	1



Security Level: 3

Part Number	Description	H	W	D	QTY
AP2-A	AP2-A (DB-1 Shallow)	600	450	165	1



Security Level: 3

Part Number	Description	H	W	D	QTY
AP3-A	AP3-A (DB-1 Deep)	600	450	260	1
AP3-S	AP3-S (DB-1T Box - Thin)	600	450	75	1



Part Number	Description	H	W	D
020-293	PB-small B-A	27	124	22
020-292	PB-medium B-B	31	147	30
020-291	PB-large B-C	27	250	55
020-081	DMC DEVICE PLATE RL2 (DEV-D)	195	40	3
020-082	DMC DEVICE PLATE RL1 (DEV-C)	145	145	3
020-083	DMC DEVICE PLATE RL3A (DEV-G)	255	215	3
020-084	DMC DEVICE PLATE RL3 (DEV-H)	255	215	3
020-085	DMC DEVICE PLATE RL4 (DEV-O)	345	240	3
020-086	DMC DEVICE PLATE RL5 (DEV-Q)	385	295	3

Enclosures

Hinges

Locks

Handles

Accessories

Rotary Operating
Handles

Insulators

Transformer
Equipment

Index

Enclosures

MATERIAL	DMC (Dough Moulding Compound)			
OPERATING TEMPERATURE	+200°C on DMC lids and +110°C on Polycarbonate Lids			
GLOW WIRE CAPABILITY / FLAMMABILITY	960° / UL94 V0			
EXPECTED UV LIFE (DIRECT EXPOSURE)	25 years +			
IP LEVEL	IP54			
SECURITY LEVEL	1	2	3	4
ENVIRONMENT (INDOOR/OUTDOOR)	Indoor and Outdoor use			

Hinges

Locks

Handles



Accessories

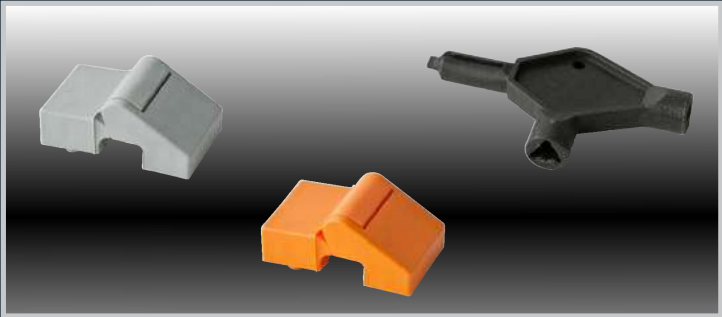
Dimensions			Base	Lid	7035 RAL Base		Orange Base		Qty Per Box	Device Plate (Sold Separately)	
H	W	D	D	D	Grey Lid	Clear Lid	Orange Lid	Clear Lid		SMC Version	Powder Coated Mild Steel
					IP 68	IP 68	IP 68	IP 68			
186	151	132	90	50	OK0-G	OK0-GC	OK0-O	OK0-OC	4	OKM-0	OKM-0M
260	165	160	135	45	OK1-G	OK1-GC	OK1-O	OK1-OC	4	OKM-1	OKM-1M
260	260	160	137	48	OK2-G	OK2-GC	OK2-O	OK2-OC	2	OKM-2	OKM-2M
340	260	160	135	50	OK3-G	OK3-GC	OK3-O	OK3-OC	2	OKM-3	OKM-3M
530	340	160	135	45	OK4-G	OK4-GC	OK4-O	OK4-OC	1	OKM-4	OKM-4M

Rotary Operating
Handles

Insulators



Transformer
Equipment



Index

Part Number	Description
OKPH-G	DMC Hinge Set -Grey
OKPH-O	DMC Hinge Set -Orange
OKM-MS	Stainless Steel Mounting Brackets
OK-BP	Blind Plug
OK-G/SCREWS	Cover Sealing Screws
OKARI-HAND	Handle
OKI-INT	Interconnector



Weather & UV Resistant
(20 Year outdoor life)



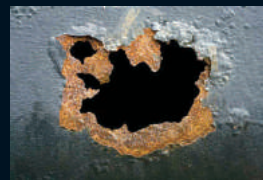
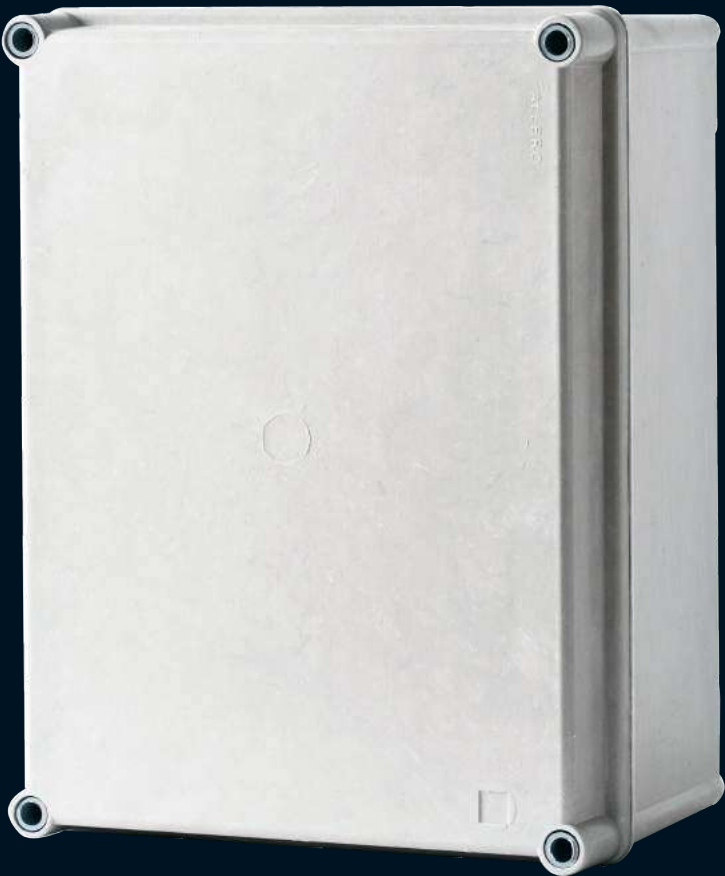
Halogen Free



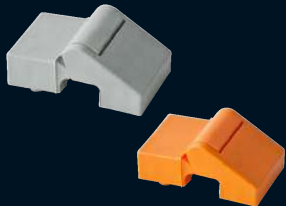
External mounting
system ensures
IP level is not
compromised



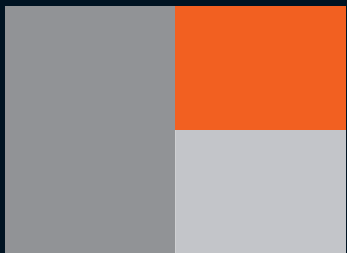
Flame Retardant



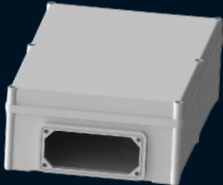
Durable GRP Material



External Hinges can
be added



Can be
Colour Impregnated



Multiple boxes can be joined
using "INT" Interconnectors

Terminal Boxes

High Impact Enclosures for tough environments



Enclosures
Hinges
Locks
Handles
Accessories
Rotary Operating Handles
Insulators
Transformer Equipment
Index

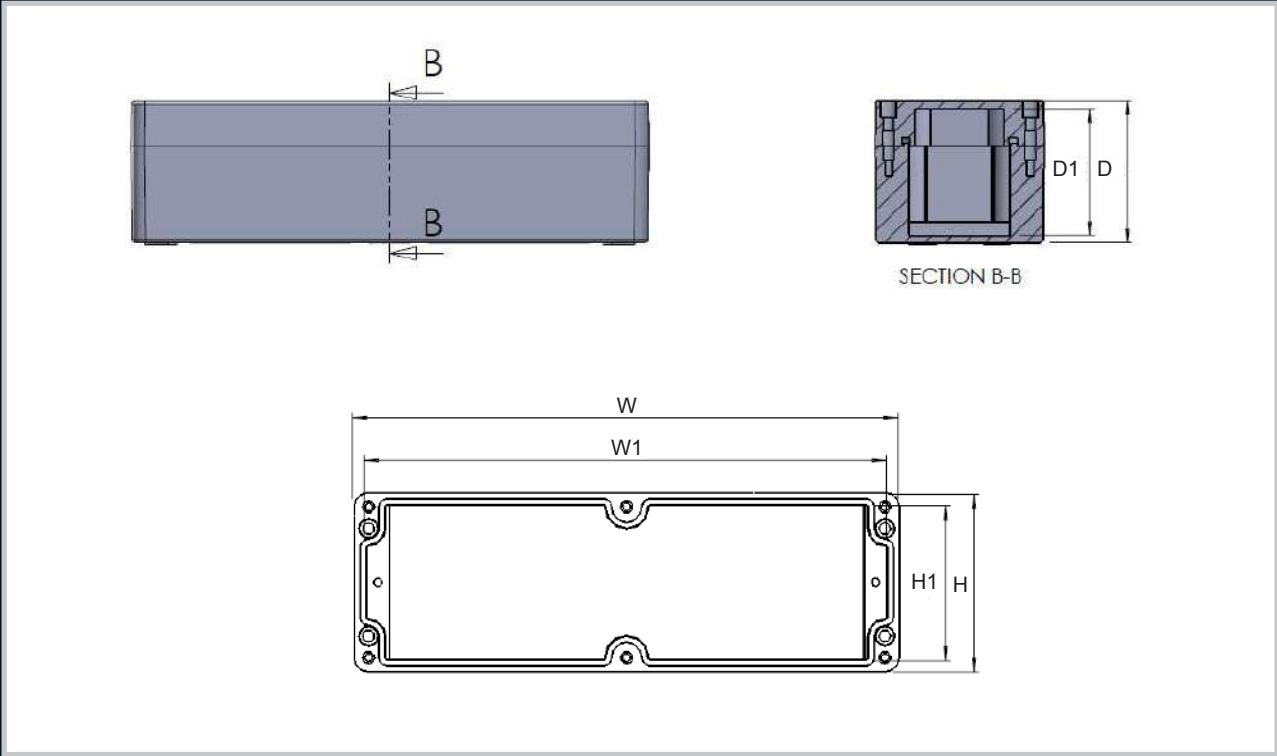
MATERIAL	DMC (Dough Moulding Compound)
OPERATING TEMPERATURE	-50° C to + 200° C
GLOW WIRE CAPABILITY / FLAMMABILITY	960° / UL94 V0
EXPECTED UV LIFE (DIRECT EXPOSURE)	25 years +
IP LEVEL	IP68
SECURITY LEVEL	Security Level 1 for Round Enclosure and Security Level 2 for Square/Rectangle Enclosure
ENVIRONMENT (INDOOR/OUTDOOR)	Indoor and Outdoor use



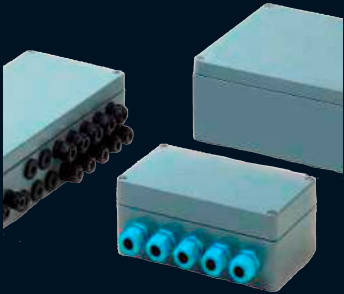
Dimensions (mm)			Part Number	Description	IP Level	QTY PER BOX
H	W	D				
108	Round	68	040-702	UB40 (20mm)	68	20
135	Round	85.5	040-793	UB41 (25mm)	68	20

Terminal Boxes

High Impact Enclosures for tough environments



External Dimensions (mm)			Internal Dimensions (mm)			Part Number		IP Level	QTY PER
H	W	D	H1	W1	D1	Black (Eex)	Grey		BOX
75	80	61	65	70	56	0808KE/I	0808POK/I	68	10
75	110	64	65	100	54	0811KE/I	0811POK/I	68	10
75	160	61	65	150	54	0816KE/I	0816POK/I	68	10
75	190	61	65	180	54	0819KE/I	0819POK/I	68	10
75	230	63	65	220	54	0823KE/I	0823POK/I	68	10
120	125	90	110	115	80	1212KE/I	1212POK/I	68	10
120	220	95	110	210	85	1222KE/I	1222POK/I	68	10
160	160	95	147	147	86	1616KE/I	1616POK/I	68	10
160	260	95	146	246	86	1626KE/I	1626POK/I	68	10
160	360	95	146	346	86	1636KE/I	1636POK/I	68	10
160	560	95	146	550	86	1656KE/I	1656POK/I	68	10
250	255	128	237	242	113	2526KE/I	2526POK/I	68	10
250	400	128	237	387	113	2540KE/I	2540POK/I	68	10
250	600	128	237	587	121	2560KE/I	2560POK/I	68	10
410	400	128	387	397	113	4140KE/I	4140POK/I	68	10
250	255	163	237	242	149	2526KE/DI	2526POK/DI	68	10
250	400	163	237	387	149	2540KE/DI	2540POK/DI	68	10



* Versions Available

Enclosures

Hinges

Locks

Handles

Accessories

Rotary Operating
Handles

Insulators

Transformer
Equipment

Index

Enclosures

Hinges

Locks

Handles

Accessories

Rotary Operating
Handles

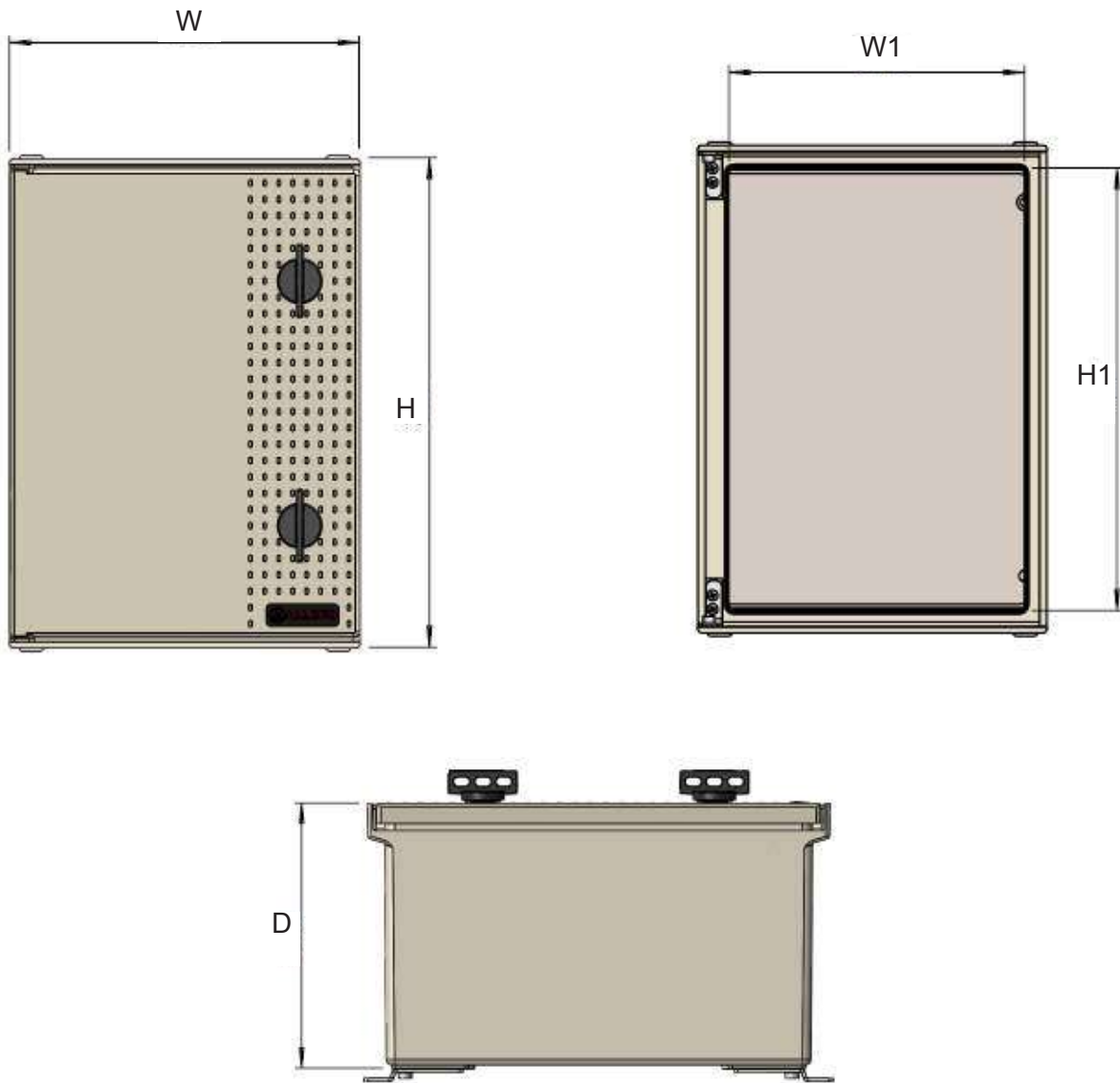
Insulators

Transformer
Equipment

Index

MATERIAL	SMC (Sheet Moulding Compound)			
OPERATING TEMPERATURE	-50° C to + 200° C			
GLOW WIRE CAPABILITY / FLAMMABILITY	960° / UL94 V0			
EXPECTED UV LIFE (DIRECT EXPOSURE)	25 years +			
IP LEVEL	Allbrox 3,4,5,6,7.1 is IP66 and Allbrox 8 is IP65			
SECURITY LEVEL	1	2	3	4
ENVIRONMENT (INDOOR/OUTDOOR)	Indoor and Outdoor use			

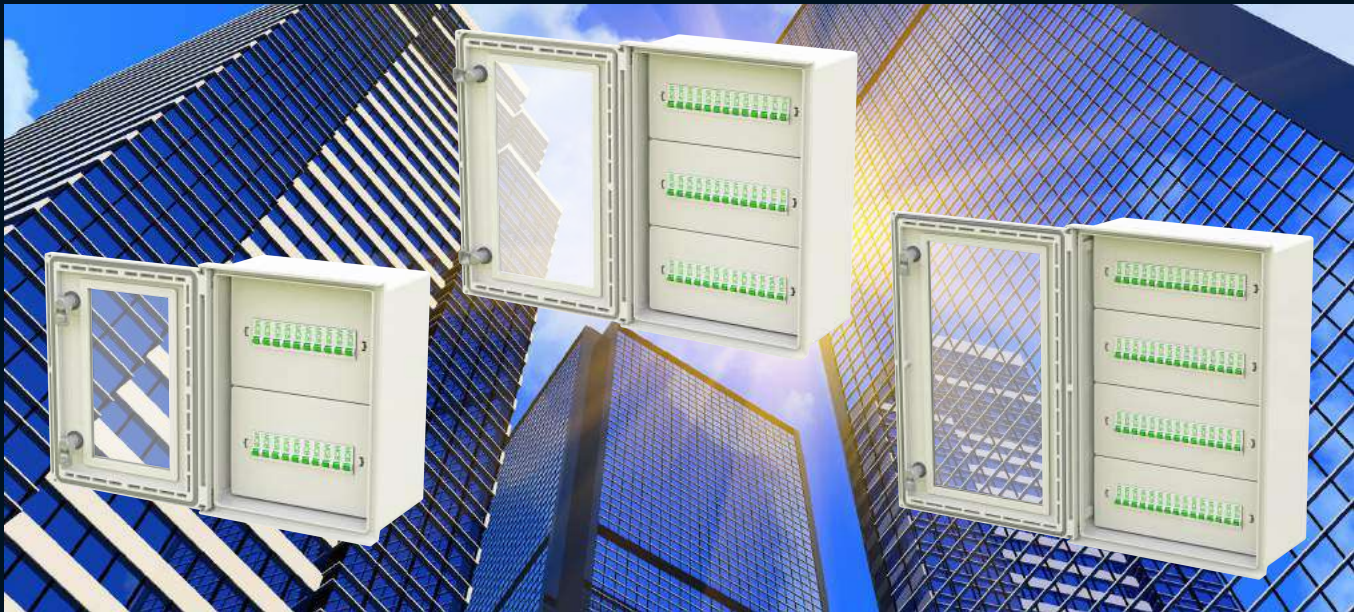




Part Number	Description	W	H	D	W1	H1
ALL-003	Allbrox 3 with SMC Device plate	250	350	200	212	317
ALL-004	Allbrox 4 with SMC Device plate	300	400	200	262	364
ALL-005	Allbrox 5 with SMC Device plate	350	500	200	312	467
ALL-006	Allbrox 6 with SMC Device plate	400	600	200	362	567
ALL-007.1-P	Allbrox 7.1 Portrait with SMC Device plate	710	828	287	634	754
ALL-007.1-L	Allbrox 7.1 Landscape with SMC Device plate	828	710	287	754	634
ALL-008-P	Allbrox 8 Portrait with SMC Device plate	800	1000	320	710	910
ALL-008-L	Allbrox 8 Landscape SMC Device plate	1000	800	320	910	710

ALLBROX 4-6

Distribution Board Kit



Inner Doors



Allbrox Distribution Board Kit

Part Number	Description	No. of Rows	MCB's Per Row	No. of Neutral Bars	No. of Earth Bars
ALL-004/DBK-A	Allbrox 4 Distribution Board Kit Assembled	2	10	3	2
ALL-004/DBK-F	Allbrox 4 Distribution Board Kit Flat Packed	2	10	3	2
ALL-005/DBK-A	Allbrox 5 Distribution Board Kit Assembled	3	13	4	4
ALL-005/DBK-F	Allbrox 5 Distribution Board Kit Flat Packed	3	13	4	4
ALL-006/DBK-A	Allbrox 6 Distribution Board Kit Assembled	4	15	3 and 1	10 and 30
ALL-006/DBK-F	Allbrox 5 Distribution Board Kit Flat Packed	4	15	3 and 1	10 and 30

Allbrox Inner Door

Part Number	Description
ALL-004/IN/DOOR	Allbrox 4 Inner Door
ALL-005/IN/DOOR	Allbrox 5 Inner Door
ALL-006/IN/DOOR	Allbrox 6 Inner Door

Allbrox with PC Window

Part Number	Description
ALL-003/CLEARPC	Allbrox 3 with clear Polycarbonate window
ALL-004/CLEARPC	Allbrox 4 with clear Polycarbonate window
ALL-005/CLEARPC	Allbrox 5 with clear Polycarbonate window
ALL-006/CLEARPC	Allbrox 6 with clear Polycarbonate window

ALLBROX 7.1



Door locator



Easily Removable door



Extra strength lid

Enclosures	Hinges	Locks	Handles	Accessories	Rotary Operating Handles	Insulators	Transformer Equipment	Index
------------	--------	-------	---------	-------------	--------------------------	------------	-----------------------	-------

Enclosures

Hinges

Locks

Handles

Accessories

Rotary Operating
Handles

Insulators

Transformer
Equipment

Index

ALLBROX 8



Door stay



Internal Stainless steel hinges.



Chrome handle locking mechanism.



Single cam individual locking system IP66



Single handle multi cam locking system IP65

FABLEC

ABS - Economy Range of General Purpose Plastic Enclosures



MATERIAL	ABS Plastic			
OPERATING TEMPERATURE	-30° C to + 90° C			
GLOW WIRE CAPABILITY / FLAMMABILITY	960° / UL94 V0			
EXPECTED UV LIFE (DIRECT EXPOSURE)	2-3 Years (6 Years - Indirect exposure)			
IP LEVEL	IP55			
SECURITY LEVEL	1	2	3	4
ENVIRONMENT (INDOOR/OUTDOOR)	Indoor and Outdoor use			



Part Number	Description	H	W	D	QTY
FEP-0014	ABS Enclosure - Standard Grey Lid	100	100	70	80
FEP-0016	ABS Enclosure - Standard Grey Lid	100	100	90	60
FEP-0015	ABS Enclosure - Standard Transparent Lid	100	100	70	80
FEP-0017	ABS Enclosure - Standard Transparent Lid	100	100	90	60



Part Number	Description	H	W	D	QTY
FEP-0022	ABS Enclosure - Standard Grey Lid	190	140	90	20
FEP-0024	ABS Enclosure - Deep Grey Lid	190	140	135	16
FEP-0023	ABS Enclosure - Standard Transparent Lid	190	140	190	20
FEP-0025	ABS Enclosure - Deep Transparent Lid	190	140	135	16



Part Number	Description	H	W	D	QTY
FEP-0026	ABS Enclosure - Standard Grey Lid	240	190	100	10
FEP-0028	ABS Enclosure - Deep Grey Lid	240	190	155	4
FEP-0027	ABS Enclosure - Standard Transparent Lid	240	190	100	10

Enclosures

Hinges

Locks

Handles

Accessories

Rotary Operating
Handles

Insulators

Transformer
Equipment

Index

Enclosures

The concept of ready boards was introduced in the mid 90's as a rapid way to deploy basic electrical access to a large portion of the community who were without this commodity. Allbro (York) was the first company in South Africa to create a technically sound commercially viable and large scale production for this concept. Allbro remains one of the largest producers of this product while actively working on creating more sophisticated and sustainable distribution methods for basic electrical supply to the community.

Hinges

2 Platforms

RB - A

RB-H

Locks

Handles

Accessories



Available in different Bulkhead options
(or no Bulkhead - No Lightswitch)

Standard Bulkhead

Slimline Bulkhead

New CFL only Bulkhead - will not close with standard globes, forcing the consumer to use Low power CFL's

Rotary Operating Handles

Insulators

Transformer Equipment



Part Number	Description
BUL-60W	60watt Bulkhead Ventilated
BUL-100W	100watt Bulkhead Ventilated

Part Number	Description
BUL-SLIMLINE	Slimline Bulkhead

Part Number	Description
LWB-001	CFL Bulkhead

Index

Note: We invented these light fittings specifically for our ready boards but many markets now use them as stand alone light fittings.

Different Plugsets



SA Standard

13A Square Pin

Shucko

Different Mounting Options for Easy Deployment

Compact SMC Backing Board

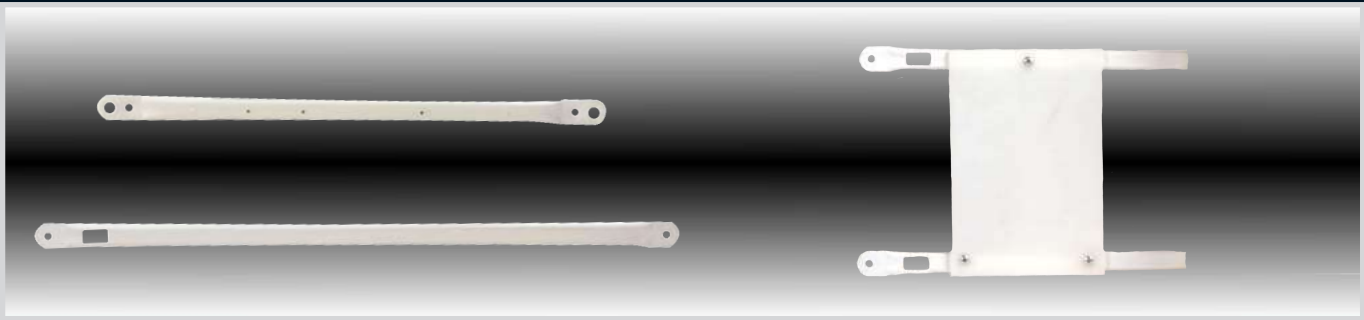


Rails

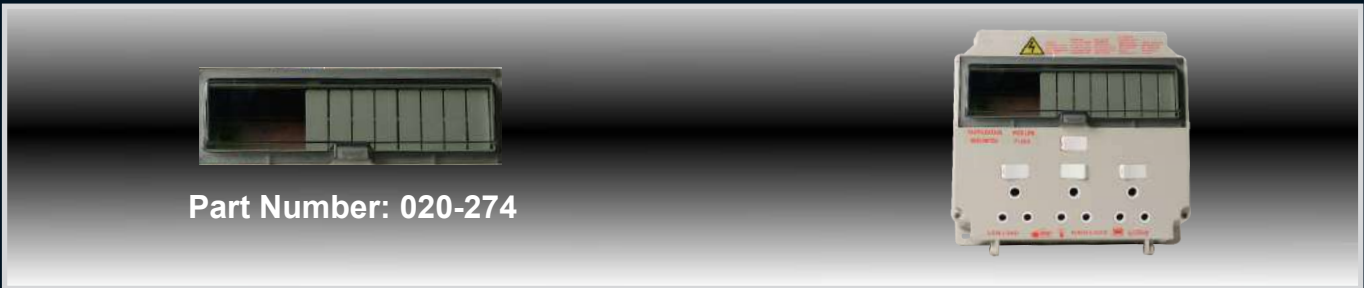
Large SMC Backing Board with Wiring Tunnel



Rails with Perspex
Meter Mounting Point



Optional Cover for RBH



Part Number: 020-274

Enclosures

Hinges

Locks

Handles

Accessories

Rotary Operating
Handles

Insulators

Transformer
Equipment

Index

Enclosures

Hinges

Locks

Handles

Accessories

Rotary Operating
Handles

Insulators

Transformer
Equipment

Index

Different Breaker Options



Swan

LS

Onesto

NUR

ABB

CBI

GE

Schneider

Chint

Some PRE - configured Options



Part Number	Earth Leakage	MCB'S	No of 3 Pin Switched Socket Outlets	Bulkhead Light Fitting with Switch
040-705 (RBH1)	63A	2 x 20A	3	-
040-707 (RBH1B)	63A	2 x 20 A	3	1



Part Number	Earth Leakage	MCB'S	No of 3 Pin Switched Socket Outlets	Bulkhead Light Fitting with Switch
RB-AB10/63	63A	1 x 20A	3	-
RB-AB2/63	63A	1 x 20A	3	1

Splitmeter Ready Board



Part Number	Earth Leakage	MCB'S	No of 3 Pin Switched Socket Outlets	Bulkhead Light Fitting with Switch
040-706	63A	1 x 20A	2	-

Passive Bases

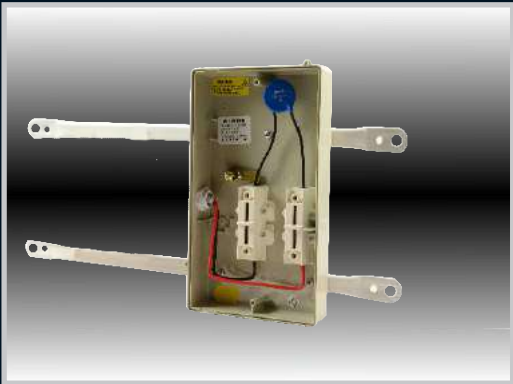
Universal Base for Pre- payment meters

Passive With Rails & Plugset



Part Number	Description	QTY
PAS	Passive Base with Rails and Plugset	1

Passive With Rails



Part Number	Description	QTY
PAS-1	Passive Base with Rails	1

Passive



Part Number	Description	QTY
PAS-2	Passive Base with glands and hole cover	1
PAS -3	Passive base with no rails, no glands, no hole cover	1

Enclosures

Hinges

Locks

Handles

Accessories



Rotary Operating
Handles

Insulators

Transformer
Equipment

Index

To cater for the vast array of Ready Board configuration we have designed the table below:

	Configuration	Bulkhead	Globe	Mounting	Plug Type	Breaker Type	Main Switch/Iso	Earth Leakage/ Main	
RB Ready Board	H Horizontal 	0 No Bulkhead	0 None	0 None	Z SA type 	S Swan 	0 None	E 63EL 63A DP EL Isol 	0 None
	A Vertical 	B Standard Bulkhead 	G Globe 14w CFL 	L Large SMC backing board 	S Shuko type 	A ABB 	1 1 x 25A MCB	C GL breaker combination	1 1 x 10A SP MCB
		C CFL-Round 		S Small SMC backing board 	B BS type 	O Onesto 	2 1 x 10A MCB	L 40A EL	2 1 x 20A SP MCB
		S Slimline 		R Rails 		L LS 	3 1 x 16A 2P MCB	0 None	3 1 x 32A SP MCB
		X 5m Lead with Lampshade 		P Rails with perspex mounting 		G GE 	4 1 x 40A MCB		4 1 x 6A SP MCB
		M 3m lead with Bulkhead 		E Rails with Passive 		C CBI 	5 1 x 50A MCB		5 1 x 63A SP MCB
				M Mounting Plate 		N NUR 	6 1 x 63A MCB		6 1 x 16A SP MCB
				G Rails with 4x4 plugset 		F Schneider 			7 1 x 25A SP MCB
						T Chint 			
						0 None 			
<p>Note: Please note that number indicates position & current rating of breaker.</p> <p>Example: (22) = 2 x 20A (212) = 1 x 20A, 1 x10A, 1 x 20A</p>									

Enclosures
Hinges
Locks
Handles
Accessories
Rotary Operating Handles
Insulators
Transformer Equipment
Index

How the coding system works

Example:

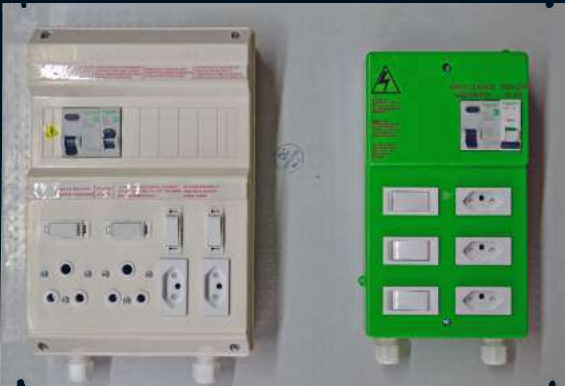
You are looking for the following requirements in your Ready Board:

- Horizontal configuration
- Standard Bulkhead
- With a Globe
- Large mounting plate
- SA type plug
- Swan breakers
- No mainswitch
- Earth Leakage
- 2 x 20A SP MCB
- 1 x 16A SP MCB
- 1 x 32A SP MCB

Your code is then created using the table on the previous page and looks like this:

RBHBGLZS0E2263

* Should you need any assistance please contact our sales department.



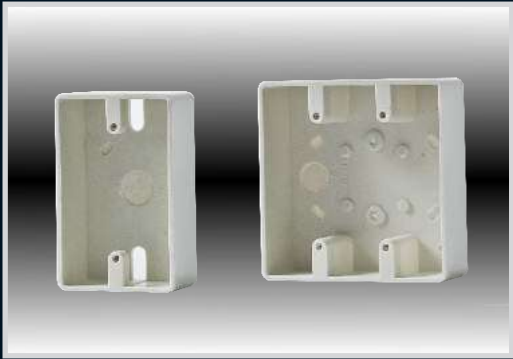
Enclosures	
Hinges	
Locks	
Handles	
Accessories	
Rotary Operating Handles	
Insulators	
Transformer Equipment	
Index	

H	W	D	Part Number	Description	QTY
85	130	70	040-609	PSO-1 (S15)	24
85	130	70	040-662	PSO-1/A with single socket outlet	24

H	W	D	Part Number	Description	QTY
85	130	70	040-609/ISO	PSO-1/ ISO with 60 Amp Isolator	24

H	W	D	Part Number	Description	QTY
130	130	70	040-754	S15- Duo Empty Double socket outlet	12
130	130	70	040-770	S15/A- Duo with Double socket outlet	12

H	W	D	Part Number	Description	QTY
130	173	88	040-610	PSO-2 (F010)	12
130	173	88	040-663	PSO-2/A with double socket outlet	12



H	W	D	Part Number	Description	QTY
118	70	36	040-723	A-42 Single surface mount socket outlet box (DMC version)	20
118	118	36	040-724	A-44 Double surface mount socket outlet box (DMC version)	20



Part Number	Description	H	W	D	QTY
040-788	PVC 4x2 Wall Box	62	107	51	10
040-789	PVC 4x4 Wall Box	109	108	51	10



Part Number	Description	H	W	D	QTY
040-790	PVC 4x2 Extension Box	127	81	42	10
040-791	PVC 4x4 Extension Box	127	127	42	10



Part Number	Description	H	W	D	QTY
040-633	DMC ST - 1 box (S64)	149	109	55	40

Enclosures

Hinges

Locks

Handles

Accessories

Rotary Operating
Handles

Insulators

Transformer
Equipment

Index

Enclosures

Hinges

Locks

Handles

Accessories

Rotary Operating
Handles

Insulators

Transformer
Equipment

Index



Fitted Pool Boxes



H	W	D	Part Number	Description	QTY	
315	185	120	040-659	WP-1 with 125VA & Dial Timer	4	Pool-Fit
315	185	120	040-660	WP-1 with 125VA & PanasonicTimer	4	Pool-Fit
315	185	120	040-683	WP-1 with 300VA & Dial Timer	4	Pool-Fit
315	185	120	040-684	WP-1 with 300VA & Panasonic Timer	4	Pool-Fit

Empty Pool Boxes



H	W	D	Part Number	Description	QTY	
315	185	120	040-617	WP-1Din E+N Bar	6	Pool -Din
315	185	120	040-667	WP-1Sam E+N Bar	6	Pool - Sam
315	185	120	040-668	WP-1 Din+Wood Block	6	Pool- 5way Din
315	185	120	040-669	WP-1 Sam+Wood Block	6	Pool- 6way Sam
315	185	120	040-689	WP-1 Din + Raised wooden block	6	Pool-Din wood



New Fitted Pool Box

H	W	D	Part Number	Description	QTY	IP
220	250	100	040-771	DBH-1 Pool Fit (50VA)	1	54
220	250	100	040-785	DBH-1 Pool Fit (125VA)	1	54



H	W	D	Part Number	Description	IP Level	QTY
200	110	60	040-744	YB4 Din (Holds 4 Din type breakers)	31	20
200	110	60	040-758	YB5 Sam (Holds 5 Samite type breakers)	31	4



H	W	D	Part Number	Description	IP Level	QTY
240	190	70	040-759	YB6/11 Sam (Holds 11 Samite type breakers)	31	10



H	W	D	Part Number	Description	IP Level	QTY
365	255	73	040-363	MP-16 with E/N Bar Sam or Din (Holds 11 Din type breakers and 20 Samite type breakers)	31	5
365	255	73	040-704	MP-16 Screw on Lid (Holds 11 Din type breakers and 20 Samite type breakers)	31	5



H	W	D	Part Number	Description	IP	QTY
220	250	100	040-711	DBH-1 Outdoor DB without Circuit Breakers (Holds 12 Din Type breakers)	54	1

* Hinged Lid



H	W	D	Part Number	Description	IP	QTY
215	150	80	040-690	F081-SAM (Holds 8 Samite type breakers)	54	8

* Slide Lid

Enclosures

Hinges

Locks

Handles

Accessories

Rotary Operating
Handles

Insulators

Transformer
Equipment

Index

Enclosures

12 Way Distribution Board



H	W	D	Part Number	Description	IP	QTY
220	250	100	020-309	Flush mount distribution board with cover	65	1
220	250	100	020-310	Surface mount distribution board with cover	65	1

Hinges

Locks

17 Way Distribution Board



H	W	D	Part Number	Description	IP	QTY
220	250	100	020-311	Flush mount distribution board with samite cover	65	1
220	250	100	020-312	Surface mount distribution board with samite cover	65	1

Handles

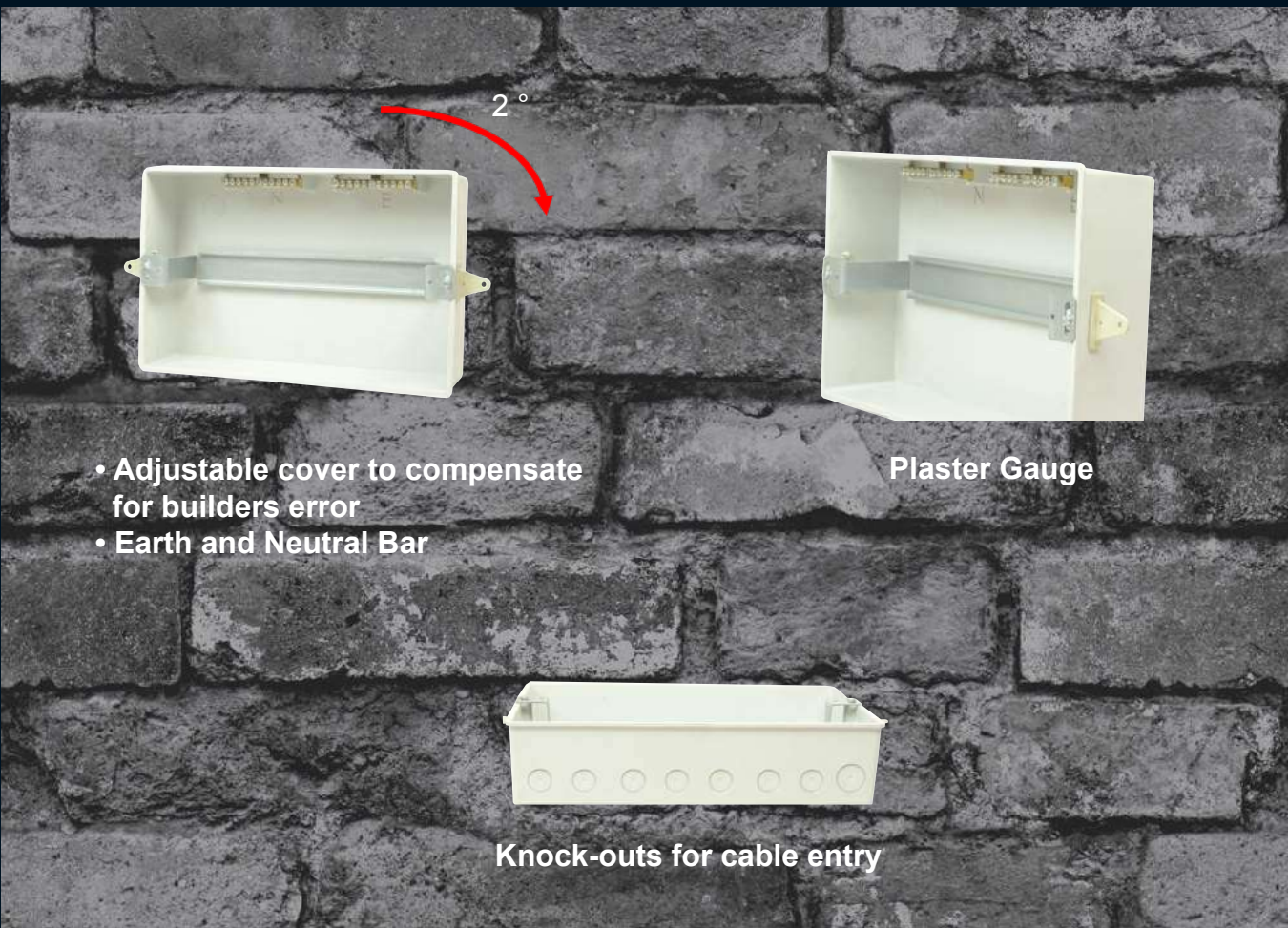
Accessories

Rotary Operating Handles

Insulators

Transformer Equipment

Index





H	W	D	Part Number	Description	IP	QTY
200	110	60	040-760	WDB5- B 5 Way Sam Surface Box	65	4



H	W	D	Part Number	Description	IP	QTY
350	250	160	040-745	WDB8 - B 8 Way Din Surface Box	65	2



H	W	D	Part Number	Description	IP	QTY
350	250	160	040-746	WDB12-B 12 Way Sam Surface Box	65	2



H	W	D	Part Number	Description	IP	QTY
400	300	140	040-747	WDB20-B 20 Way Din Surface Box	65	2



H	W	D	Part Number	Description	IP	QTY
400	300	140	040-743	WDB24-B 24 Way Sam Surface Box	65	2

Enclosures

Hinges

Locks

Handles

Accessories

Rotary Operating
Handles

Insulators

Transformer
Equipment

Index

Enclosures

Hinges

Locks

Handles

Accessories

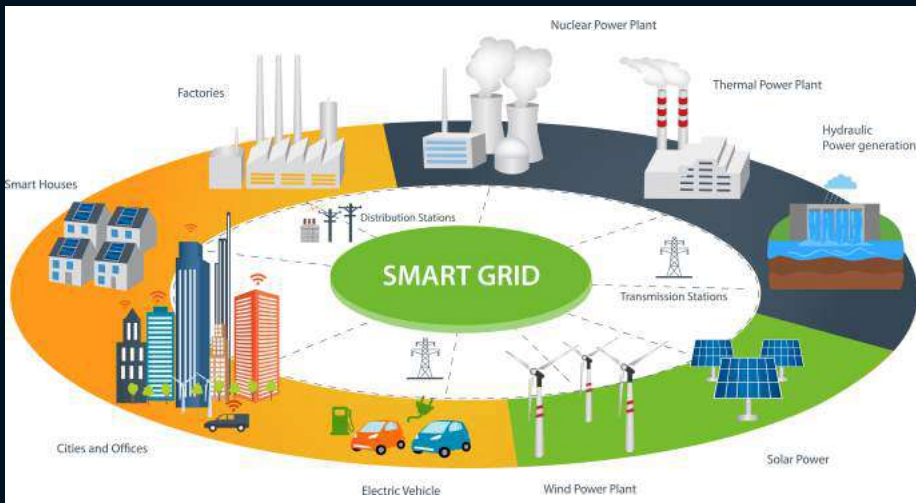
Rotary Operating
Handles

Insulators

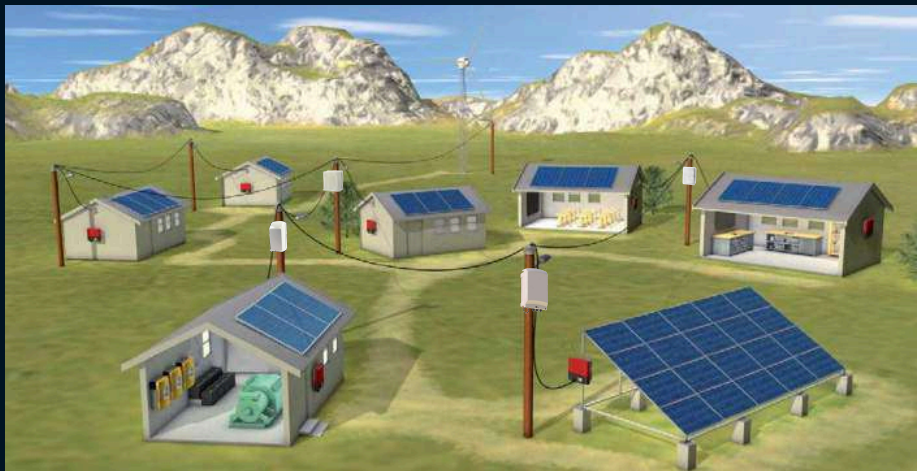
Transformer
Equipment

Index

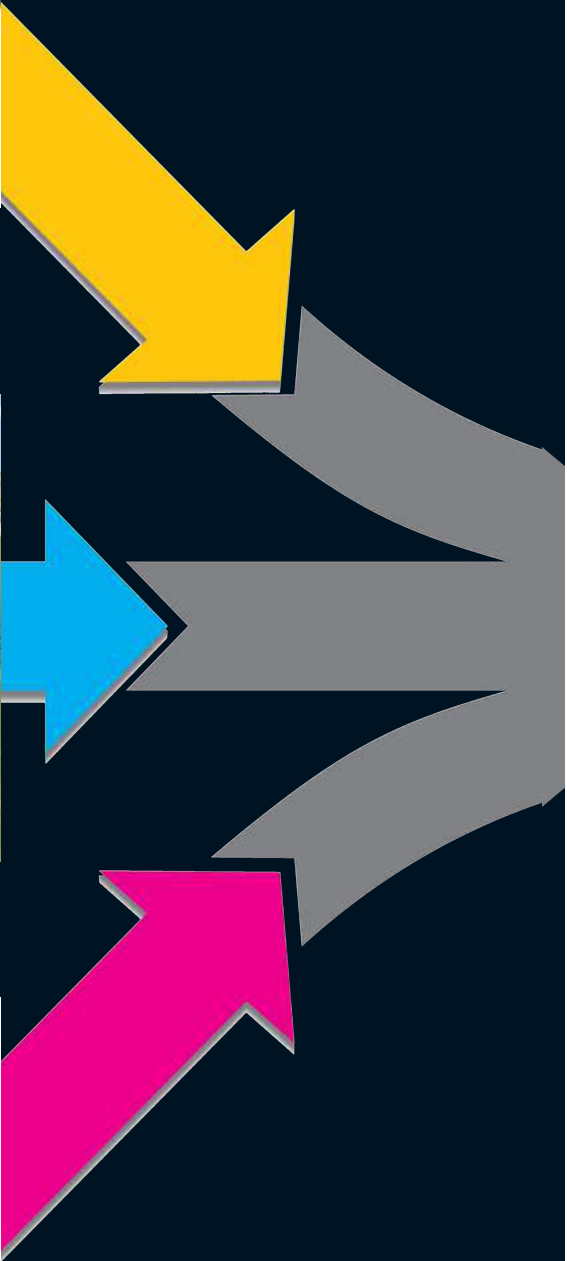
SMART GRIDS



MICRO/MINI GRIDS





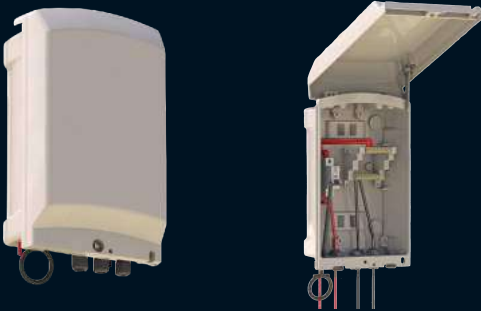
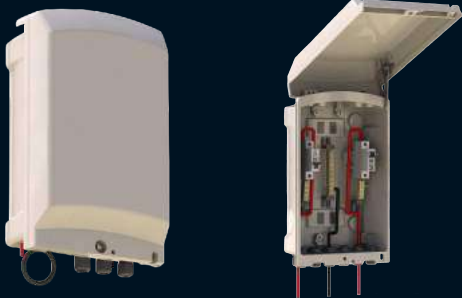
OFF GRID





Note: Backing Boards are a great way to pre-fit a solution for fast and reliable deployment.

Enclosures
Hinges
Locks
Handles
Accessories
Rotary Operating Handles
Insulators
Transformer Equipment
Index

Enclosures							
Hinges	Locks	Part Number and Description			H (mm)	W (mm)	D (mm)
		Part Number: 040-644 SAP Number: 0168788 CB11 - 1-2 Way pole top box with 1x50A breaker			200	100	90
	Handles	Part Number: 040-677 SAP Number: 0168574 CB21 - 2-4 Way pole top box with 1x50A breaker			200	100	90
		Part Number: 040-639 SAP Number: 0168787 CB4 - 4 Way pole top box with 1x125A breaker			350	218	136
	Rotary Operating Handles	Part Number: 040-682 SAP Number: 0168710 CB458 - 5-8 Way pole top box with 2x50A breaker			350	218	136
	Insulators						
	Transformer Equipment						
Index							

Slide Lid Type (Empty)

Part Number and Description	Front Closed	Front Open	Back	H (mm)	W (mm)	D (mm)
Part Number: 040-645 CB44 - Single meter empty enclosure				235	105	120
Part Number: 040-794 CB45 - Single meter empty enclosure				325	169	133
Part Number: BUN5-1S5P BUN5 - 5 Way empty enclosure				309	209	121
Part Number: BUN-6WAY BUN6 - 6 Way Samite empty enclosure				309	209	121
Part Number: BUN-9WAY BUN9 - 9 Way Samite empty enclosure				340	260	150
Part Number: 040-643 CB9 - Empty enclosure				295	140	85
Part Number: 040-637 CB1 Slide Lid - Empty enclosure				255	185	120
Part Number: 040-636 CB2 - Empty enclosure				410	300	200

Enclosures
Hinges
Locks
Handles
Accessories
Rotary Operating Handles
Insulators
Transformer Equipment
Index

Pole Top Enclosures for Distribution and Metering
Hinged Type - Normal Duty



Enclosures

Hinges

Locks

Handles

Accessories

Rotary Operating
Handles

Insulators

Transformer
Equipment

Index



Part Number	Description	H	W	D
040-903	TILT 3	350	218	136
040-904	TILT 5	350	310	136
040-905	TILT 6	480	355	149

Wall Mounting or Pole Mounting - (No Additional Parts Required for Either Method)



Pole Mounting



Wall Mounting

Pole Top Enclosures for Distribution and Metering
Hinged Type - Normal Duty



AllTilt 6 3-phase



AllTilt 6 3-phase



AllTilt 6 4-way splitmeter



AllTilt 6 4-way

Enclosures						
Hinges		Locks		Handles		Accessories
				Rotary Operating Handles		Insulators
						Transformer Equipment
						Index

Pole Top Enclosures for Distribution and Metering

Hinged Type - Heavy Duty



Enclosures	<p>The value and complexity of equipment deployed across vast geographical areas has increased massively. The need to protect the function of these networks and devices has been met with all sorts of interesting ideas. Some challenges have been brilliantly overcome, but no solution has been able to completely address the convergence of the challenges that exist in this environment.</p> <p>Often-overlooked or forgotten challenges</p> <p>Vandalism: Due to the high value of enclosure content, bypassing a smart meter, disabling a surveillance system or simply stripping the contents for sale on the black market are growing global realities.</p> <p>Access Control: Ease of access for authorised personnel is often adversely affected when trying to address vandalism challenge. Monitoring and tracking of authorised personnel is important as criminal elements sometimes gain authorised status.</p> <p>IP Level (Water and Dust): While companies do their utmost to solve new challenges the primary function of the enclosure is sometimes forgotten. Electrical systems fail because of three main factors, Temperature, water and dust. The latter two are addressed by the international standard IEC61529 (SANS IEC 61529). Enclosures that are hand-made differ from each other and simply do not seal consistently.</p> <p>UV resilience and weatherability: Accelerated UV testing is primarily a measure of colour degradation. However, real life exposure has to cope with temperature cycling, rain and particle rich wind. International standards do not currently exist to test this, leaving real life long-term fields trials to provide the only genuine test of an enclosures' ability to withstand the elements.</p> <p>Human contact risk / shock hazard: When the solution to vandalism involves metallic materials there is a serious risk for personnel and public to come into contact with live electrical circuits. When such an enclosure is on a pole the risk for the person working at height is exaggerated.</p>	
Hinges	<p>Flammability: Some plastic materials are able to absorb impact very well. If one strikes a garden refuse bin with a hammer it just bounces off. The cautionary embossed words on the lid "No hot ash" point to a serious flaw in using such materials within an electrical network. All electrical enclosures are supposed to be non-flammable or at least self-extinguishing. Most utility companies require compliance to IEC 62208, which stipulates the parameters of glow wire testing and flammability. Using these materials specifically to address vandalism would incorrectly suppose that vandals only have access to hammers and not matches.</p> <p>Weight: Whilst modern composites constantly deliver greater strength to weight performance there is no way to get around the fact that weight is added when increasing the strength of a mechanical part. Keeping this weight down to a level that allows installation and does not compromise the pole or wall structure is a real challenge.</p> <p>Signal interference: Some materials create a faraday cage effect and interfere with signals that often form part of the function of the installed equipment. Antennae that are mounted outside the enclosure are a vulnerable point that also attract unwanted attention.</p>	
Locks	<div>Announcement</div> <p>Solving the above challenges is complicated and the resulting solution normally becomes costly bringing the price into question.</p> <p>AllVault is the name given to the latest innovation. Experience learned while pioneering composite mahole chamber design allowed Allbro to create what we believe is the strongest composite enclosure ever to be sold commercially.</p> <p>AllVault has been designed to address every one of the above challenges. The cost of lost revenue is not measured in the time and capital it takes to replace infrastructure. Systems that are bypassed or are out of order represent enormous values that can never be recovered. The financial case to be made to justify investment in this area is a very straightforward conclusion to prove.</p>	
Handles		
Accessories		
Rotary Operating Handles		
Insulators		
Transformer Equipment		
Index		

Pole Top Enclosures for Distribution and Metering
Hinged Type - Heavy Duty



Part Number	Description	H	W	D
040-906	AllVault empty with mechanical nut (IP 66)	581	403	201

AllVault is a world first. This high security outdoor box is made to offer exceptional protection from dust, water and unwanted personnel. The structure of the box is as important as the locking system and access control. Various locking systems have been catered for.

Mechanical	Central Access Control and Tracking	Full GPS Based Access Control
Simple and Effective Mechanical Locking Options	Dock and Trace key systems that allow central tracking of technician activity on weekly/cyclical basis.	Live GPS based Access Control System
<div><p>Coded Nuts (1000 variations) with magnetic caps works like coded wheel mag nuts</p></div>	<div><p>Multilock® Click Lock</p><p>Rayonics® Dockable Key</p></div>	<div><p>Inductive Interface to GLAM lock</p><p>Standard Android device with GSM functionality</p><p>Bluetooth interface</p><p>GSM interface</p><p>GLAM Enabled Lock</p><p>GLAM centralised management platform</p></div>

Enclosures

More modern ranges like Utilec (page 20) and Terminal (page 26) were designed to replace several of these products. Some clients still prefer the older models for specific applications so we have decided to include them in the latest catalogue.

Hinges

Locks

Handles

Accessories

Rotary Operating
Handles

Insulators

Transformer
Equipment

Index

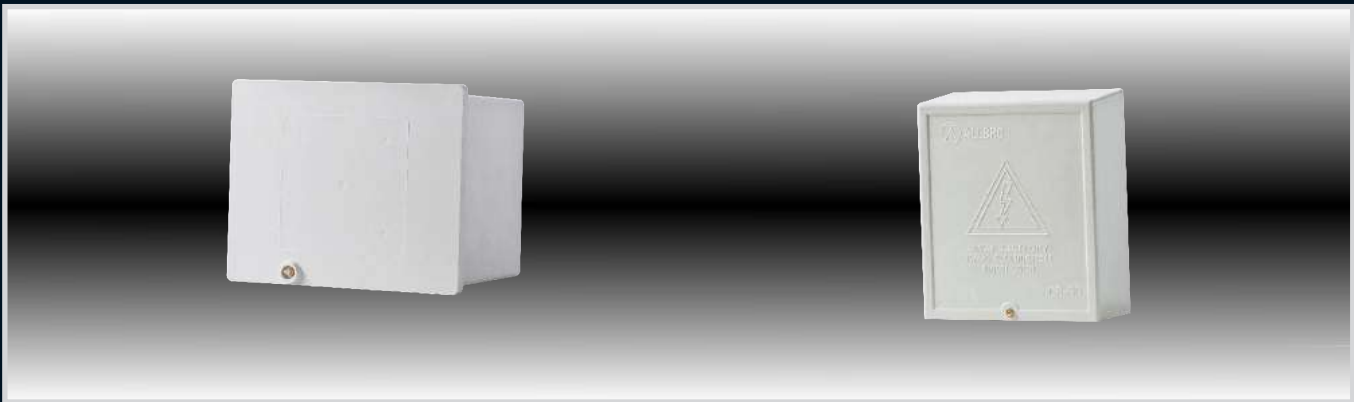
Slide Lids



040-607	UB-1
190 x 170 x 157 (H, W, D)	
040-608	UB-2
310 x 335 x 100 (H, W, D)	

040-615	UB-4boxes/lid (U2)
315 x 185 x 120 (H, W, D)	
040-666	UB-4s/lid with wood (U2-M)
315 x 185 x 120 (H, W, D)	

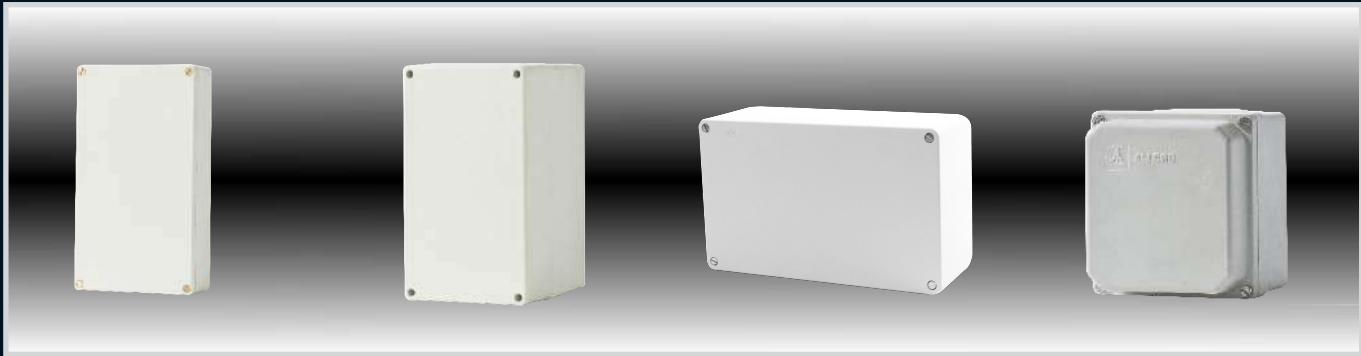
040-661	UB-7boxes/lid Trilock (ut-s1)
305 x 305 x 155 (H, W, D)	
040-623	UB-7boxes/lidCOMPLETE (U7-A)
305 x 305 x 155 (H, W, D)	



040-624	UB-8Telkom Small Lid
195 x 245 x 216 (H, W, D)	
040-625	UB-9Telkom Large Lid
212 x 365 x 250 (H, W, D)	

040-701	CB60 (S60)
160 x 140 x 60 (H, W, D)	

Screw Lids



040-756	S11	040-757	MPS13Deep (S13DEEP)	040-654	MPS14box (S14)	040-605	PB-1box
200 x 110 x 40 (H, W, D)		230 x 130 x 160 (H, W, D)		260 x 160 x 93 (H, W, D)		100 x 97 x 77 (H, W, D)	
		040-653	MPS13box (S13)			040-606	PB-2box
		230 x 130 x 120 (H, W, D)				141 x 97 x 77 (H, W, D)	



040-630	UB-4Screw on lid (U2-S1)	040-762	EMB1-BTelephoneDB with board (UB5-B)	040-703	RF-1Rooftop box
315 x 185 x 120 (H, W, D)		400 x 300 x 100 (H, W, D)		108 x 65 (H, W, D)	



040-601	MPAbox (S10)	040-626	MPEbox (J1)	040-600	MPXbox (S5B)
170 x 106 x 78 (H, W, D)		87 x 87 x 50 (H, W, D)		120 x 80 x 55 (H, W, D)	
040-602	MPBbox (S12)			040-755	MPXDeep (S5DEEP)
205 x 155 x 70 (H, W, D)				110 x 70 x 80 (H, W, D)	
040-603	MPCbox (S3S)				
305 x 205 x 110 (H, W, D)					

Enclosures

Hinges

Locks

Handles

Accessories

Rotary Operating
Handles

Insulators

Transformer
Equipment

Index

Enclosures

Hinges

Locks

Handles

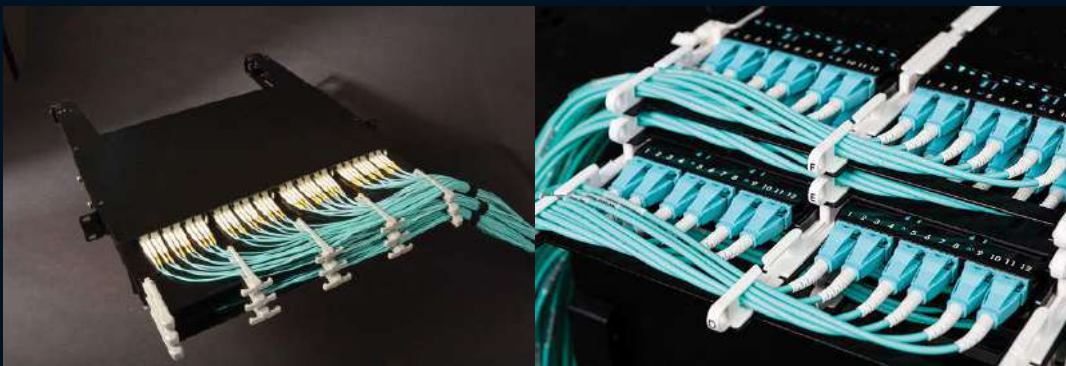
Accessories

Rotary Operating
Handles

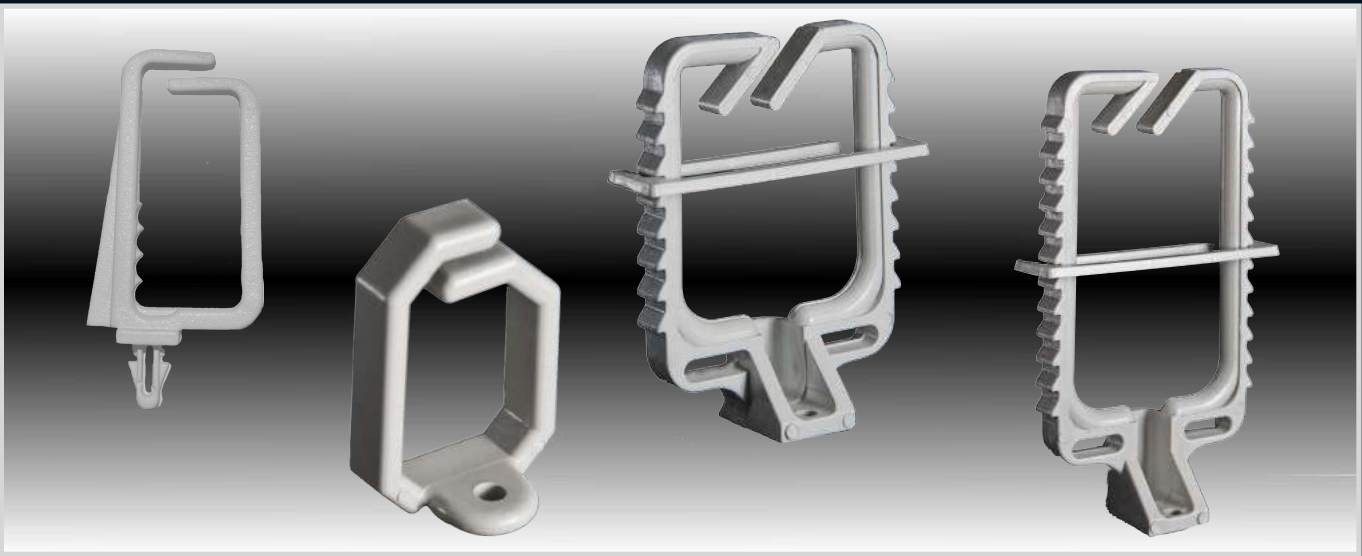
Insulators

Transformer
Equipment

Index



* Examples of similar applications



Part Number	Description
FTP-0004	100 PR Jumper Guide
FTP-0005	100 PR Jumper Guide Clip
FTP-0006	300 PR Jumper Guide
FTP-0008	600 PR Jumper Guide



Part Number	Description
FTP-0010	RJ45 - Single Wall Outlet
FTP-0011	RJ45 - Double Wall Outlet