

Terminal Boxes

High Impact Enclosures for tough environments



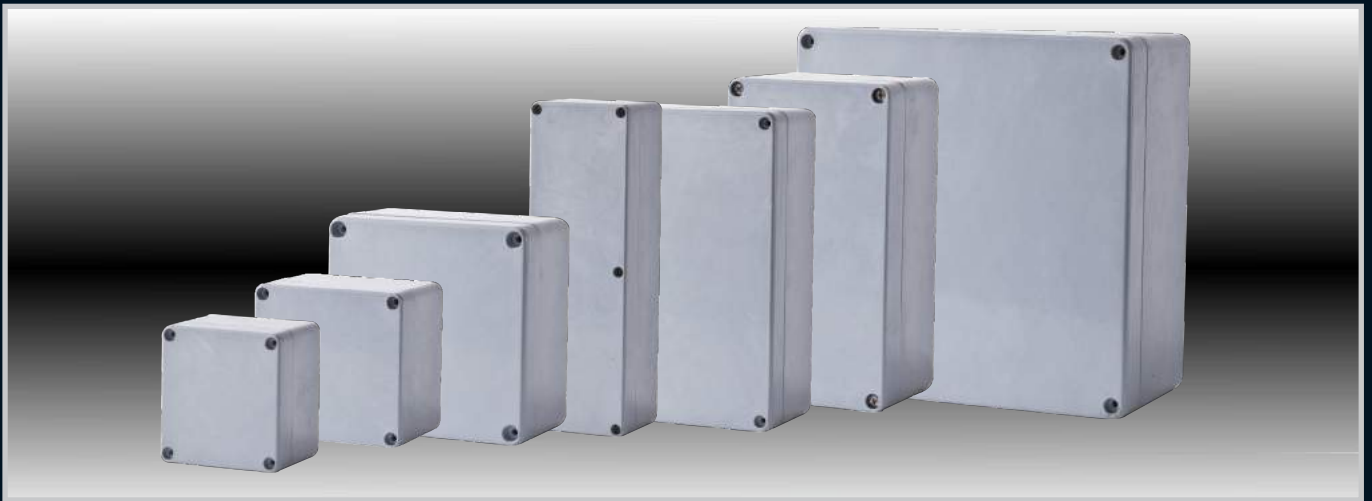
Enclosures

MATERIAL	DMC (Dough Moulding Compound)
OPERATING TEMPERATURE	-50° C to + 200° C
GLOW WIRE CAPABILITY / FLAMMABILITY	960° / UL94 V0
EXPECTED UV LIFE (DIRECT EXPOSURE)	25 years +
IP LEVEL	IP68
SECURITY LEVEL	Security Level 1 for Round Enclosure and Security Level 2 for Square/Rectangle Enclosure
ENVIRONMENT (INDOOR/OUTDOOR)	Indoor and Outdoor use

Hinges

Locks

Handles



Accessories

Rotary Operating Handles



Insulators

Transformer Equipment

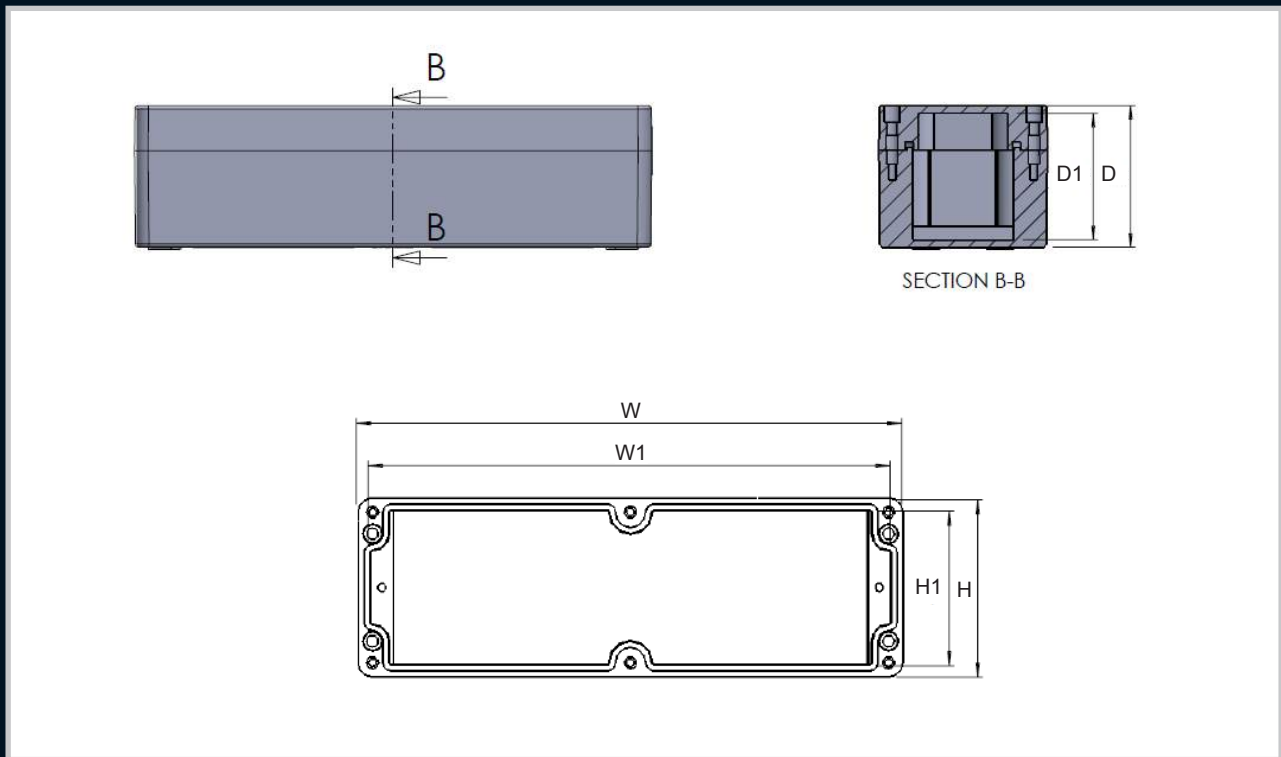


Index

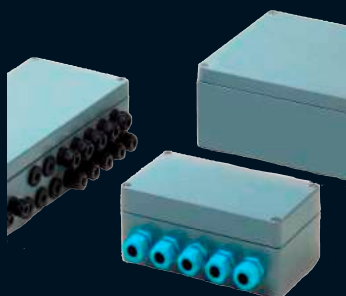
Dimensions (mm)			Part Number	Description	IP Level	QTY PER BOX
H	W	D				
108	Round	68	040-702	UB40 (20mm)	68	20
135	Round	85.5	040-793	UB41 (25mm)	68	20

Terminal Boxes

High Impact Enclosures for tough environments



External Dimensions (mm)			Internal Dimensions (mm)			Part Number		IP Level	QTY PER BOX
H	W	D	H1	W1	D1	Black (Eex)	Grey		
75	80	61	65	70	56	0808KE/I	0808POK/I	68	10
75	110	64	65	100	54	0811KE/I	0811POK/I	68	10
75	160	61	65	150	54	0816KE/I	0816POK/I	68	10
75	190	61	65	180	54	0819KE/I	0819POK/I	68	10
75	230	63	65	220	54	0823KE/I	0823POK/I	68	10
120	125	90	110	115	80	1212KE/I	1212POK/I	68	10
120	220	95	110	210	85	1222KE/I	1222POK/I	68	10
160	160	95	147	147	86	1616KE/I	1616POK/I	68	10
160	260	95	146	246	86	1626KE/I	1626POK/I	68	10
160	360	95	146	346	86	1636KE/I	1636POK/I	68	10
160	560	95	146	550	86	1656KE/I	1656POK/I	68	10
250	255	128	237	242	113	2526KE/I	2526POK/I	68	10
250	400	128	237	387	113	2540KE/I	2540POK/I	68	10
250	600	128	237	587	121	2560KE/I	2560POK/I	68	10
410	400	128	387	397	113	4140KE/I	4140POK/I	68	10
250	255	163	237	242	149	2526KE/DI	2526POK/DI	68	10
250	400	163	237	387	149	2540KE/DI	2540POK/DI	68	10



* Versions Available

Enclosures

Hinges

Locks

Handles

Accessories

Rotary Operating Handles

Insulators

Transformer Equipment

Index